



Madison, Wisconsin

CITY OF MADISON

CITY ENGINEERING DIVISION

DEPARTMENT OF PUBLIC WORKS

PLAN OF PROPOSED IMPROVEMENT

INDEX OF SHEETS

SHEET NO. LM-1	PROJECT LOCATION MAP
SHEET NO. P1-P3	WINGRA CREEK PATH & QUANN PARK PATH PLAN
SHEET NO. P4-P4.0	SHERRY PARK PATH PLAN
SHEET NO. P5	SYCAMORE PARK PATH PLAN
SHEET NO. P6-P6.0	STRUCK CANYON UNDERPASS PATH PLAN
SHEET NO. P7	WARNER PARK PATH PLAN
SHEET NO. D-1	WINGRA CREEK BIKE PATH DETOUR
SHEET NO. X1-X7	CROSS SECTIONS
SHEET NO. 1.2	SYCAMORE PARK GRADING PLAN

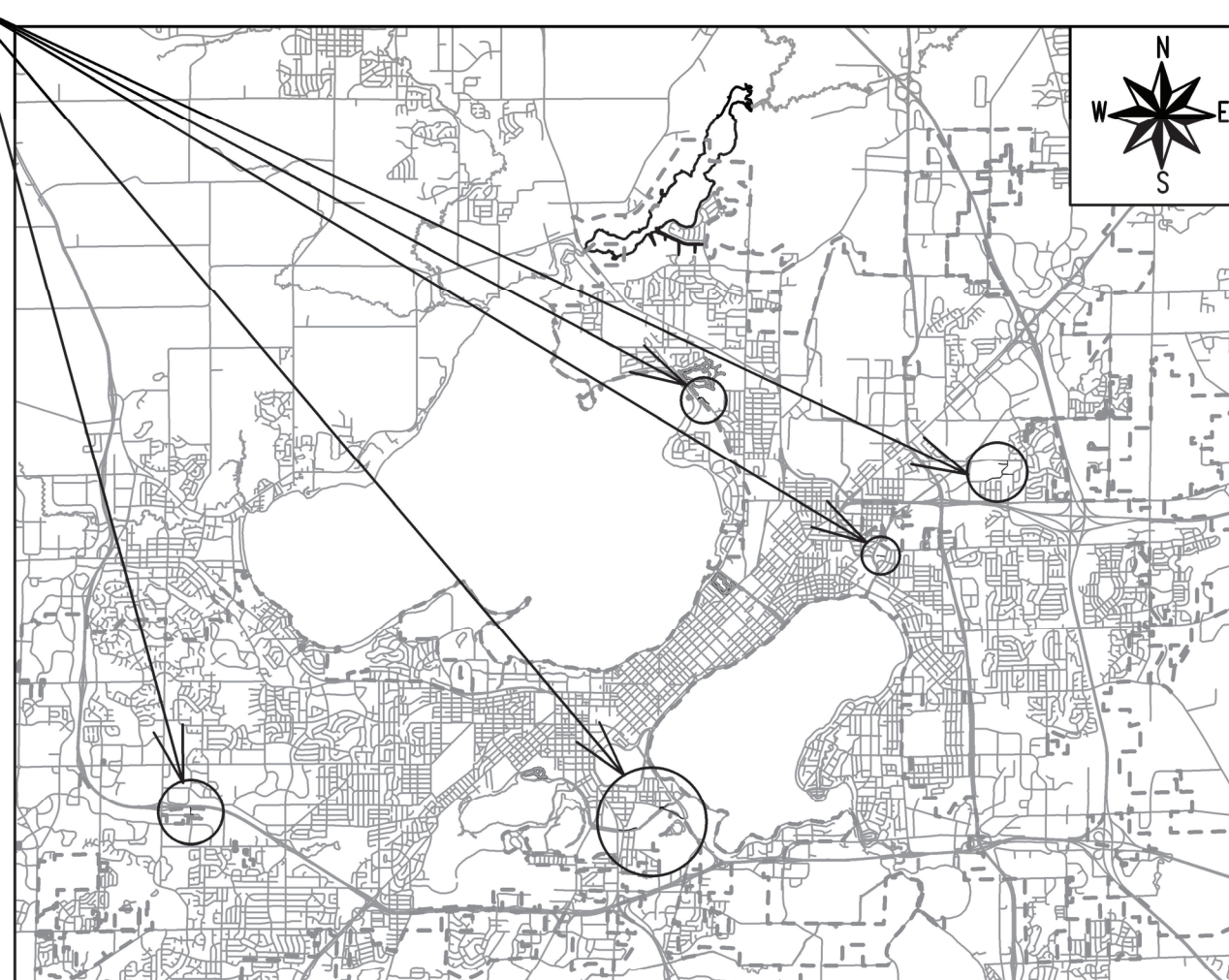
BIKEWAYS 2022

CITY PROJECT NO. 13715

CONTRACT NO. 8658

REVISION #1: 05/19/2023 BY AJC
 - ADD PATH GRADES FOR SHERRY PARK AND STRUCK CANYON UNDERPASS
 - ADD GRADING/PIPE PLAN IN SYCAMORE PARK

PROJECT LOCATIONS



CONVENTIONAL SIGNS	
FIELD VERIFY ALL UTILITY LOCATIONS	
GAS	— G —
STORM SEWER	— ST —
SANITARY SEWER	— SAN —
WATER	— W —
BURIED ELECTRIC	— E —
OVERHEAD ELECTRIC	— OH —
POWER POLE	□
ADA COMPLIANT RAMP W/ DETECTABLE WARNING FIELD	▨
COMBUSTIBLE FLUIDS	☀

NOTES:

ALL GUTTERS SHALL DRAIN WITH A MINIMUM GRADE OF 0.50% TOWARD STORM SEWER INLETS.

SIDEWALK RAMPS SHALL HAVE A MAXIMUM SLOPE OF 1" PER 12". SIDEWALK AND CURB RAMPS SHALL BE CONSTRUCTED WITH A SIDE SLOPE OF 2.00%. SIDEWALK SHALL HAVE A MINIMUM LONGITUDINAL SLOPE OF 0.50% AND A MAXIMUM LONGITUDINAL SLOPE OF 5.00% EXCEPT WHERE STREET GRADES EXCEED 5.00%.

EARTHWORK SUMMARY:

EXCAVATION CUT (MEASURED PLAN QUANTITY)	840 CY
ESTIMATED UNDISTRIBUTED UNDERCUT	650 CY
TOTAL UNCLASSIFIED EXCAVATION CUT	1490 CY

PUBLIC IMPROVEMENT PROJECT APPROVED

JUNE 7, 2022

BY THE COMMON COUNCIL OF MADISON, WISCONSIN

PUBLIC IMPROVEMENT DESIGN APPROVED BY:

Greg Fries Jun 24, 2022

City Engineer Date

PATH DESIGNED BY:



Jun 24, 2022

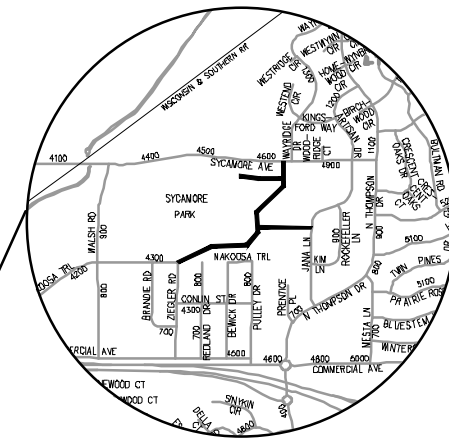
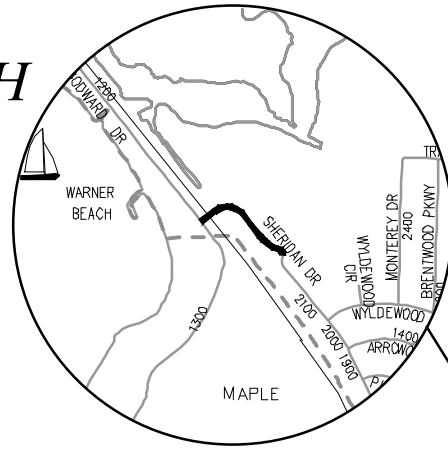
PLOT SCALE: 1 IN:1 FT_XREF

PLOT NAME: ---

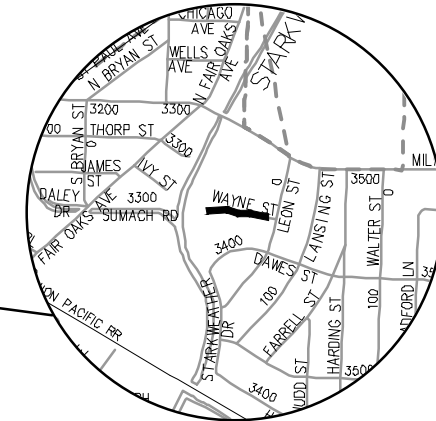
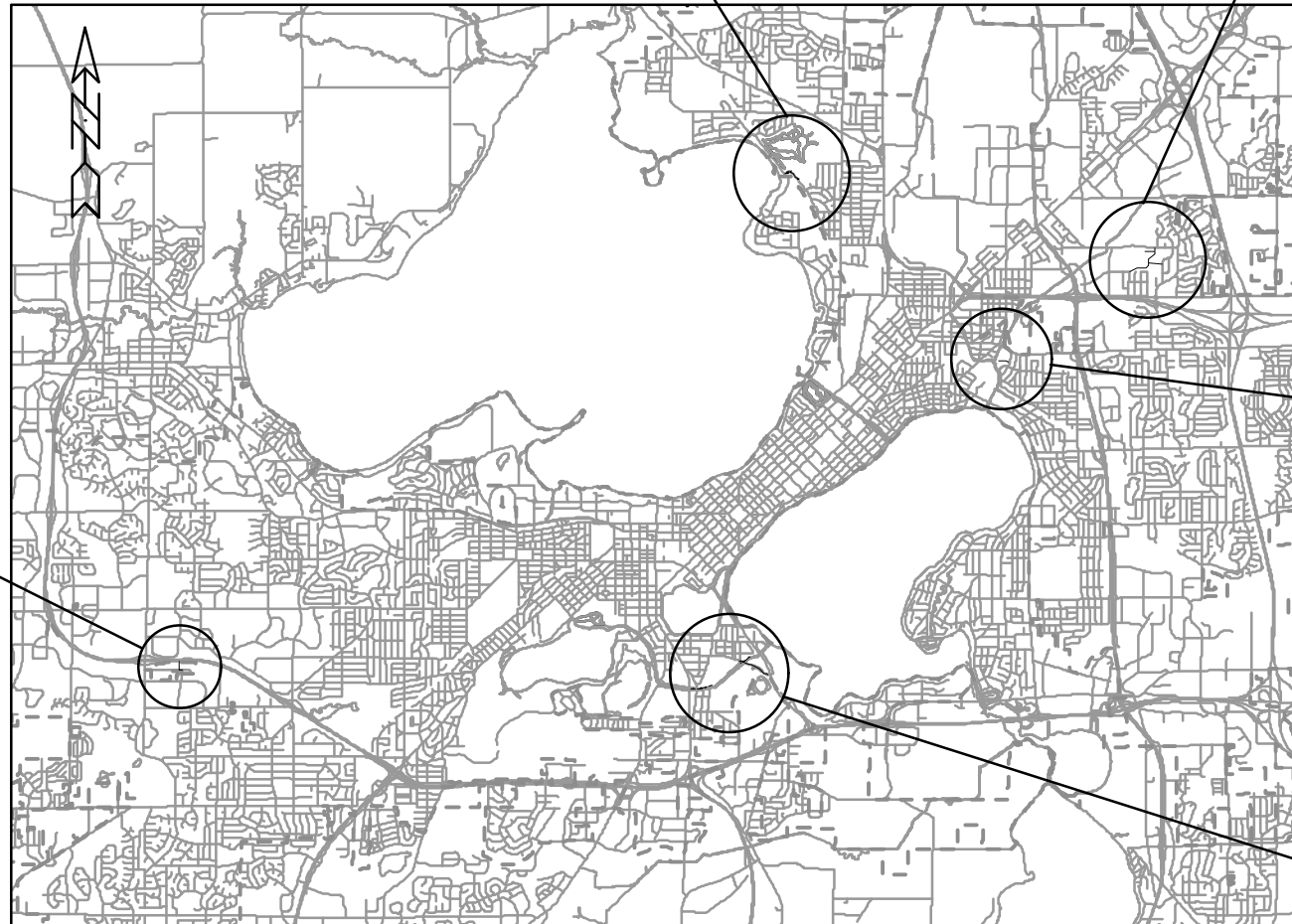
REV. DATE: 6/21/2022 4:22 PM

ORIGINATOR: CITY_OF_MADISON

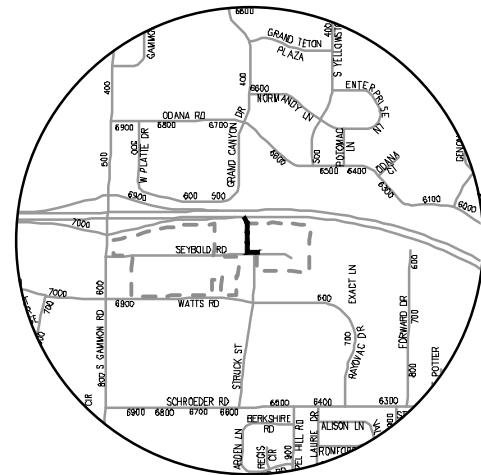
WARNER PARK PATH



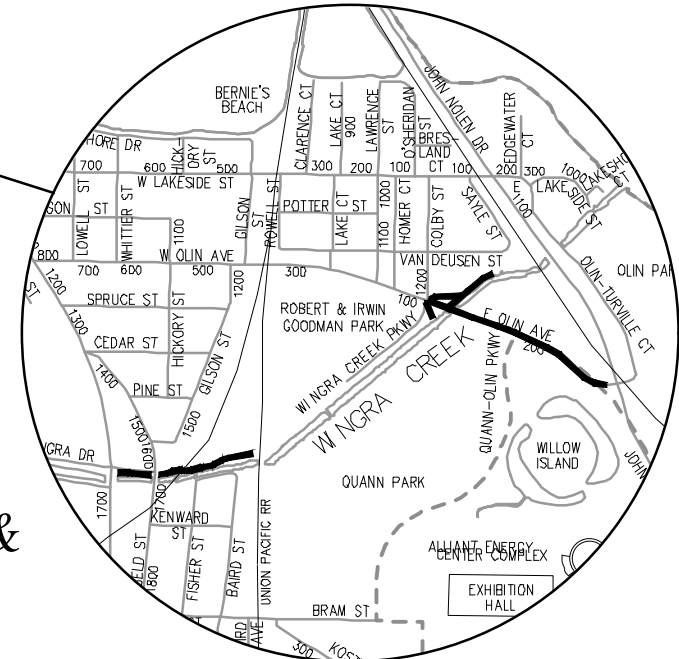
SYCAMORE PARK PATH



SHERRY PARK PATH



STRUCK CANYON UNDERPASS



WINGRA CREEK PATH & QUANN PARK PATH

MARK	REVISION	DATE	BY

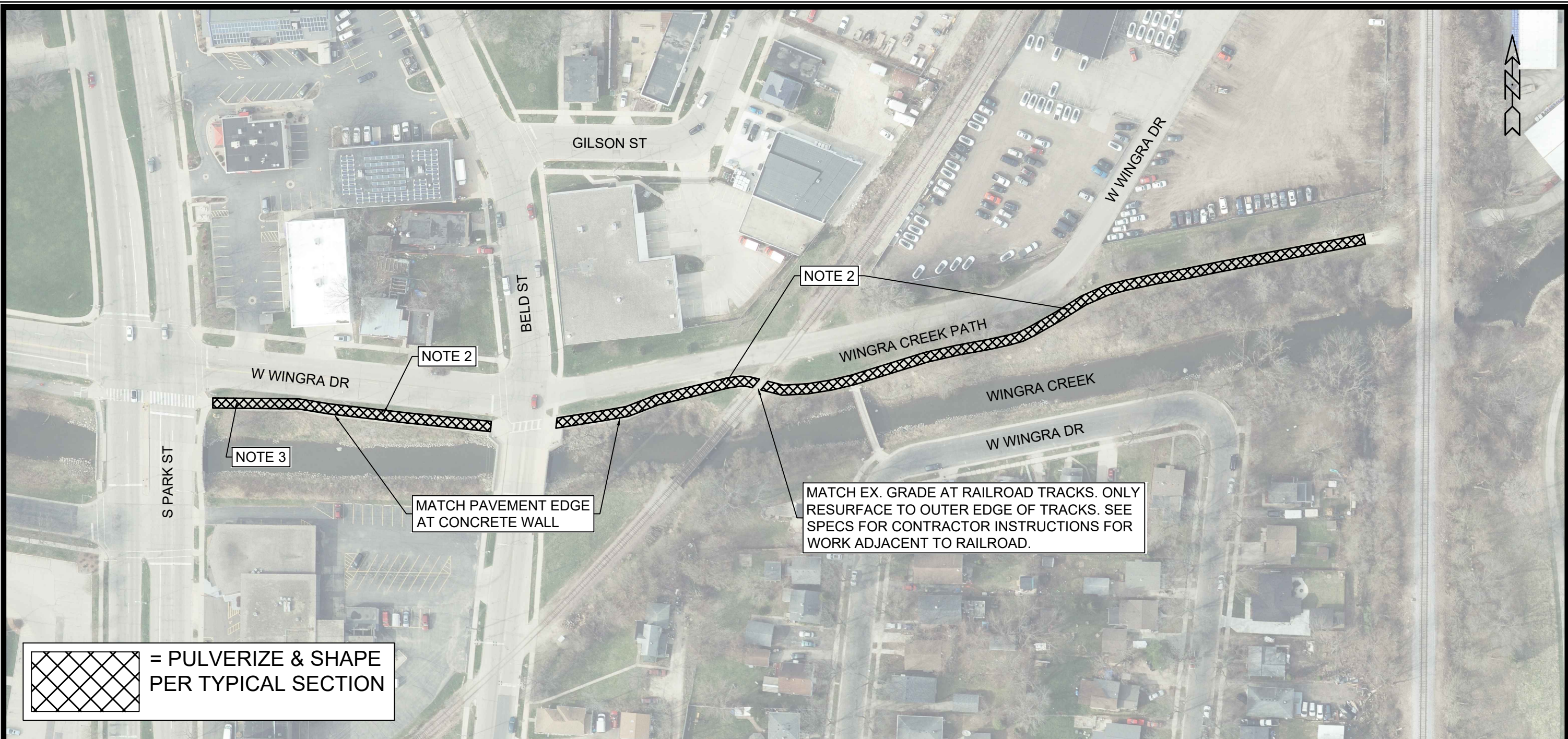
13715
MADISON, WI
8644
CONTRACT NO:

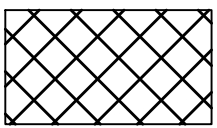
PROJECT LOCATION MAP
BIKEWAYS 2022
M:\DESIGN\Projects\13715\CAD\Streets\13715EN-TitleSheet.dwg

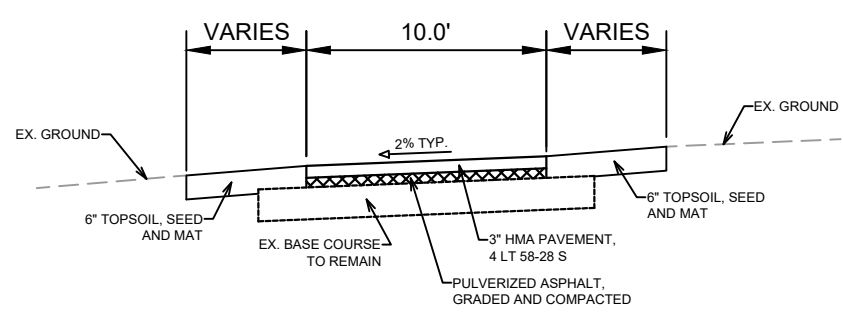


13715
LM-1

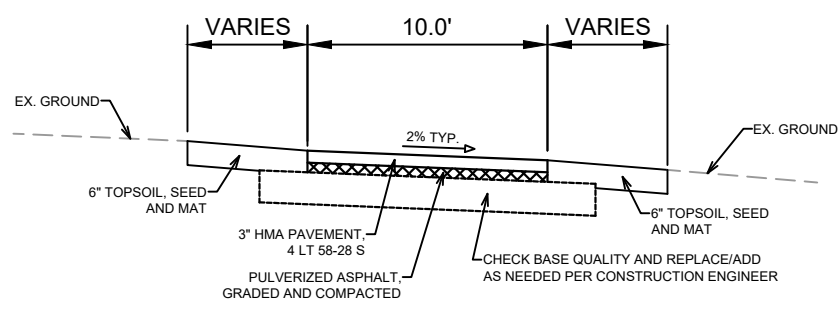
MARK	REVISION	DATE	BY



 = PULVERIZE & SHAPE PER TYPICAL SECTION



PATH TYPICAL SECTION
WINGRA CREEK PATH (FACING E)
(PARK ST TO RR TRACKS)



PATH TYPICAL SECTION
WINGRA CREEK PATH (FACING E)
(RR TRACKS TO UNDERPASS)

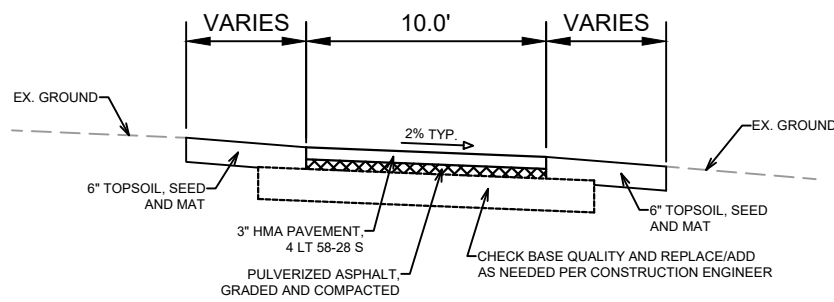
- NOTES:**
1. INSTALL 8-INCH SILT SOCK ALONG WORK AREAS WHERE PAVEMENT EDGE IS WITHIN 10-FT OF CREEK BANK.
 2. PAVEMENT MARKING EPOXY, LINE, 4-INCH (YELLOW)
 3. CONTRACTOR SHALL CONTACT CHAD VEINOT (608-267-1960) AT LEAST 48-HOURS PRIOR TO PAVING PATH TO ALLOW TRAFFIC ENG CREWS TO INSTALL NEW BIKE DETECTOR LOOPS AT THE WINGRA DR & PARK ST INTERSECTION.

MARK	REVISION	DATE	BY
137.15	06/22/2022 3:27 PM		
Designed By: AJC			Scale: 1:100
137.15			P-1

13715
MADISON, WI
8644
CONTRACT NO:

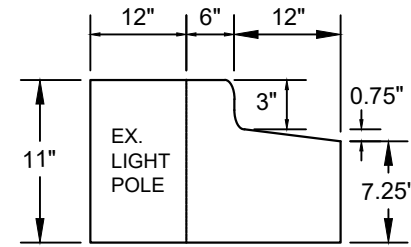
WINGRA CREEK PATH
BIKEWAYS 2022
M:\DESIGN\Projects\13715EN-Street_Goodman-Olin-Quann-Wingra.dwg





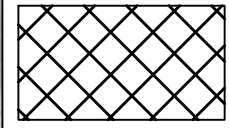
PATH TYPICAL SECTION
WINGRA CREEK PATH (FACING NE)
QUANN PARK PATH (FACING E)

MODIFIED CONCRETE CURB & GUTTER AROUND LIGHT POLE. SEE INSET DETAIL. TAPER CURB-HEAD DOWN TO MATCH ASPHALT PATH ON EITHER END.



MODIFIED CONCRETE CURB & GUTTER AROUND LIGHT POLE. (PAY AS HAND-FORMED CURB)

FILL REMAINING GRASSY AREA WITH FULL DEPTH ASPHALT AND BASE COURSE AS DIRECTED BY CONSTRUCTION ENGINEER.

 = PULVERIZE & SHAPE PER TYPICAL SECTION

INSTALL 10-FT WIDE, 5\"/>

FULL DEPTH ASPHALT & BASE COURSE REPLACEMENT AT BRIDGE APPROACH.

PAVEMENT MARKING EPOXY, LINE, 4-INCH (YELLOW)

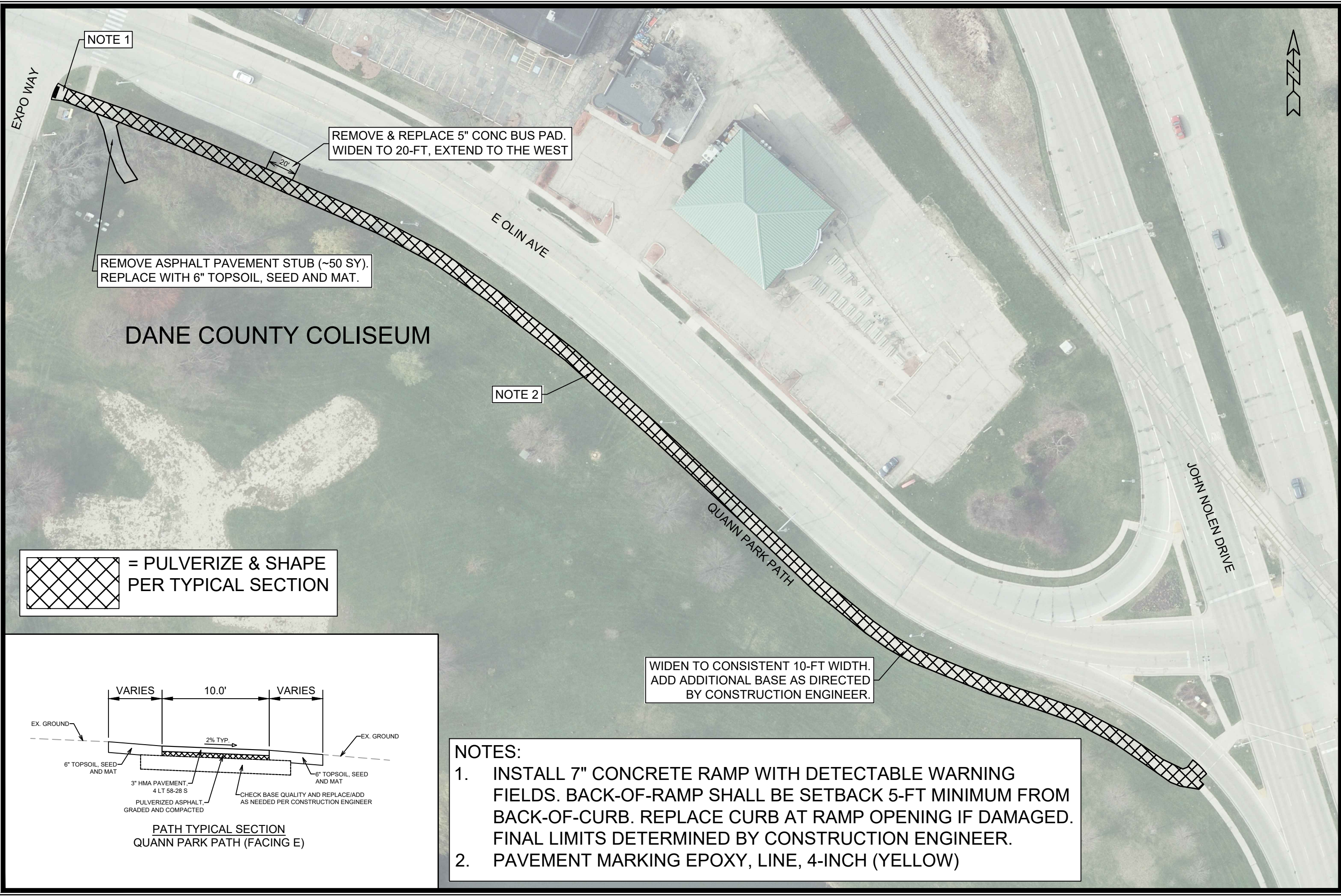
- NOTES:
1. INSTALL 7\"/>
 2. INSTALL 8-INCH SILT SOCK ALONG WORK AREAS WHERE PAVEMENT EDGE IS WITHIN 10-FT OF CREEK BANK.
 3. PAVEMENT MARKING EPOXY, LINE, 4-INCH (YELLOW)

DATE	BY
REVISION	SCALE
DESIGNED BY: AJC	DATE: 02/22/2022 3:27 PM
MARK	13715
P-2	

13715
MADISON, WI
8644
CONTRACT NO:



13715
P-2



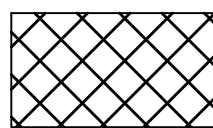
NOTE 1

REMOVE & REPLACE 5" CONC BUS PAD. WIDEN TO 20-FT, EXTEND TO THE WEST

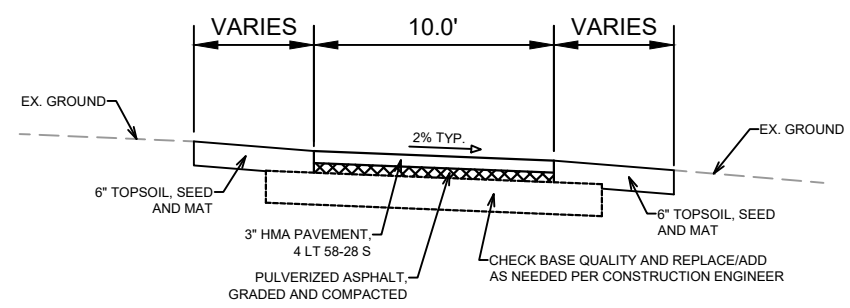
REMOVE ASPHALT PAVEMENT STUB (~50 SY). REPLACE WITH 6" TOPSOIL, SEED AND MAT.

DANE COUNTY COLISEUM

NOTE 2

 = PULVERIZE & SHAPE PER TYPICAL SECTION

WIDEN TO CONSISTENT 10-FT WIDTH. ADD ADDITIONAL BASE AS DIRECTED BY CONSTRUCTION ENGINEER.



PATH TYPICAL SECTION
QUANN PARK PATH (FACING E)

- NOTES:**
1. INSTALL 7" CONCRETE RAMP WITH DETECTABLE WARNING FIELDS. BACK-OF-RAMP SHALL BE SETBACK 5-FT MINIMUM FROM BACK-OF-CURB. REPLACE CURB AT RAMP OPENING IF DAMAGED. FINAL LIMITS DETERMINED BY CONSTRUCTION ENGINEER.
 2. PAVEMENT MARKING EPOXY, LINE, 4-INCH (YELLOW)

MARK	REVISION	DATE	BY
13715		07/27/2022	AJC
Designed By: AJC		Date: 07/27/2022	3:27 PM
Scale: 1:60		P-3	

13715
MADISON, WI
8644
CONTRACT NO:

QUANN PARK PATH
BIKEWAYS 2022
M:\DESIGN\Projects\13715\CAD\Streets\13715EN-Street_Goodman-Olin-Quann-Wingra.dwg



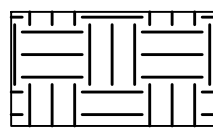
13715
P-3

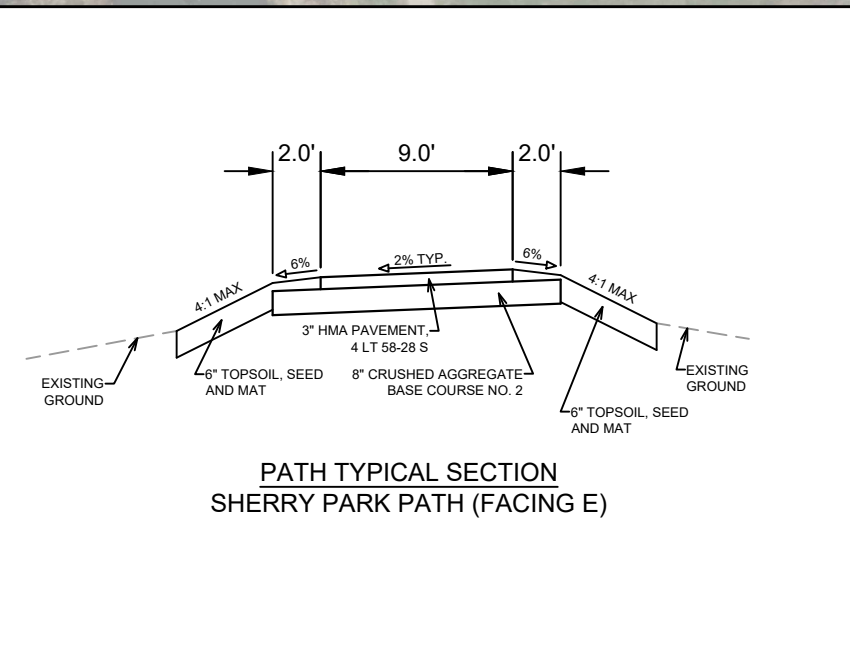
OB SHERRY PARK



MATCH AT NEW PATH BUILT WITH GARVER PATH PROJECT

PAVEMENT MARKING EPOXY, LINE, 4-INCH (YELLOW)

 = FULL DEPTH REPLACEMENT PER TYPICAL SECTION



MARK	REVISION	DATE	BY
13715	13715	6/22/2022 3:27 PM	P-4

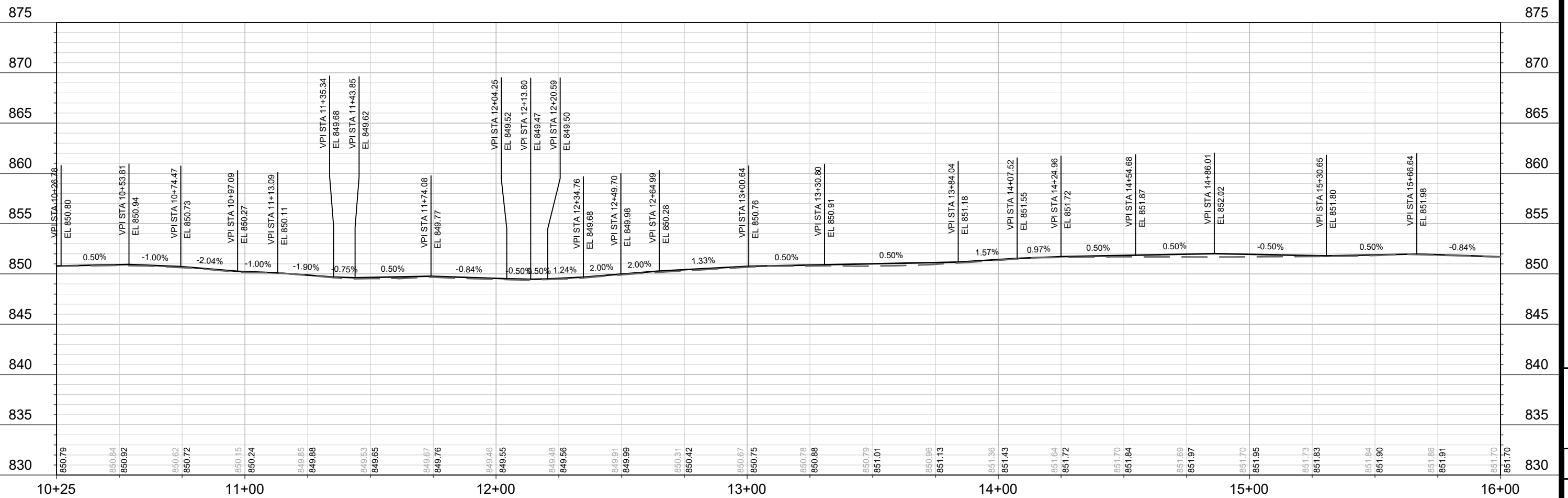
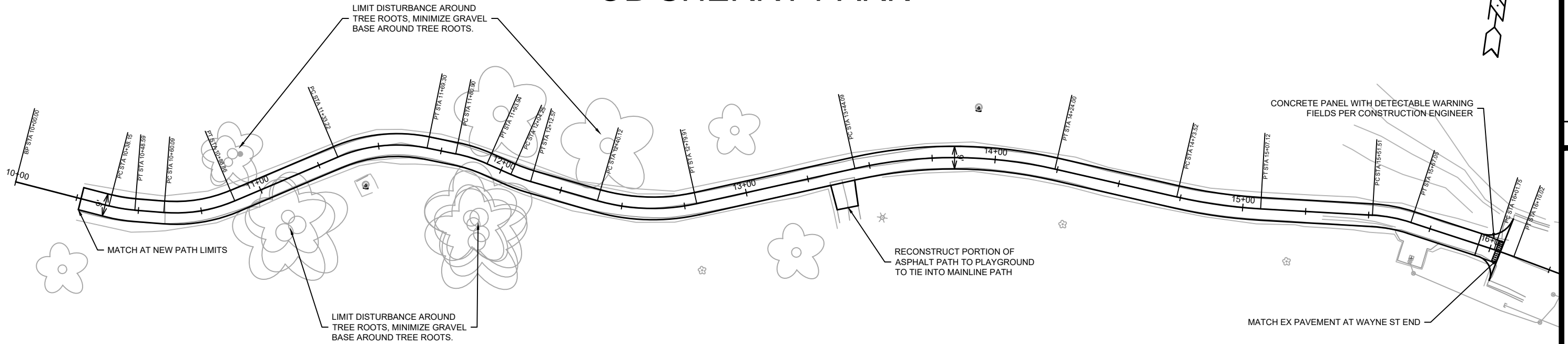
13715
MADISON, WI
8644
CONTRACT NO:

SHERRY PARK PATH
BIKEWAYS 2022
M:\DESIGN\Projects\13715\CAD\Streets\13715EN-Street_SherryPark.dwg



13715
P-4

OB SHERRY PARK



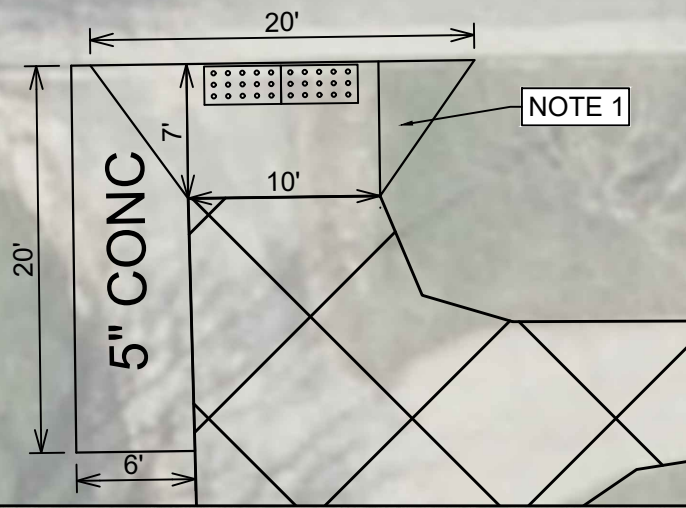
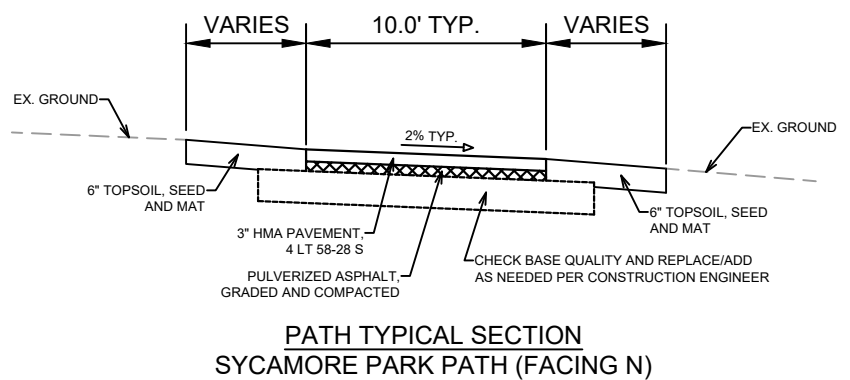
MARK	REVISION	DATE	BY
13715	5/22/2023 10:24 AM	Scale: #####	P-4.0

13715
MADISON, WI
8644
CONTRACT NO:

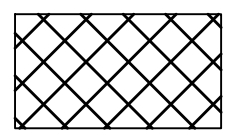
SHERRY PARK PATH - PLAN & PROFILE
BIKEWAYS 2022
M:\DESIGN\Projects\13715\CAD\Streets\13715EN-Corridor_OBSherryPark.dwg

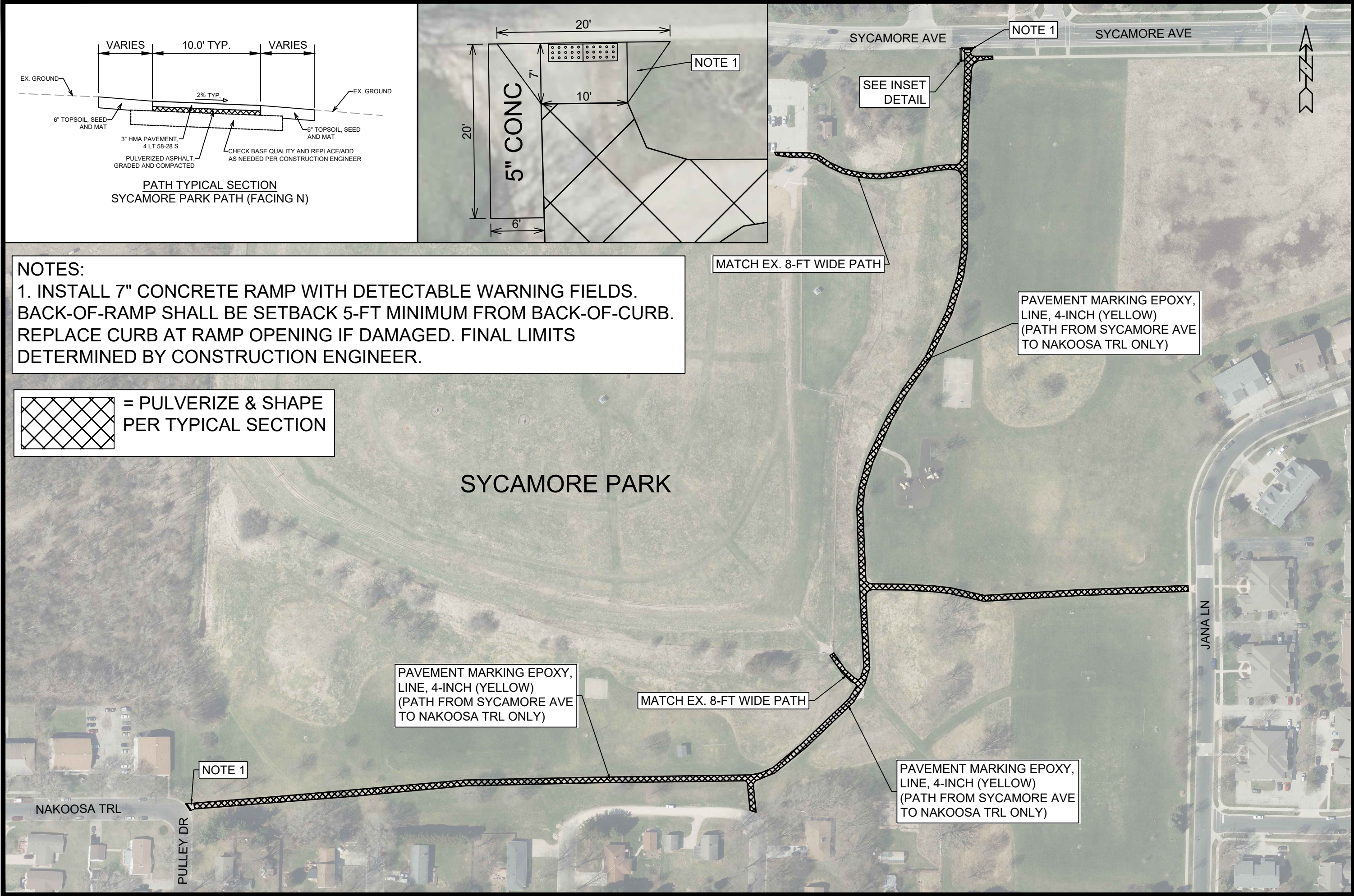


13715
P-4.0



NOTES:
 1. INSTALL 7" CONCRETE RAMP WITH DETECTABLE WARNING FIELDS. BACK-OF-RAMP SHALL BE SETBACK 5-FT MINIMUM FROM BACK-OF-CURB. REPLACE CURB AT RAMP OPENING IF DAMAGED. FINAL LIMITS DETERMINED BY CONSTRUCTION ENGINEER.

 = PULVERIZE & SHAPE PER TYPICAL SECTION




MARK	REVISION	DATE	BY
13715			
Designed By: AJC	Date: 6/22/2022 3:27 PM	Scale: 1:150	P-5

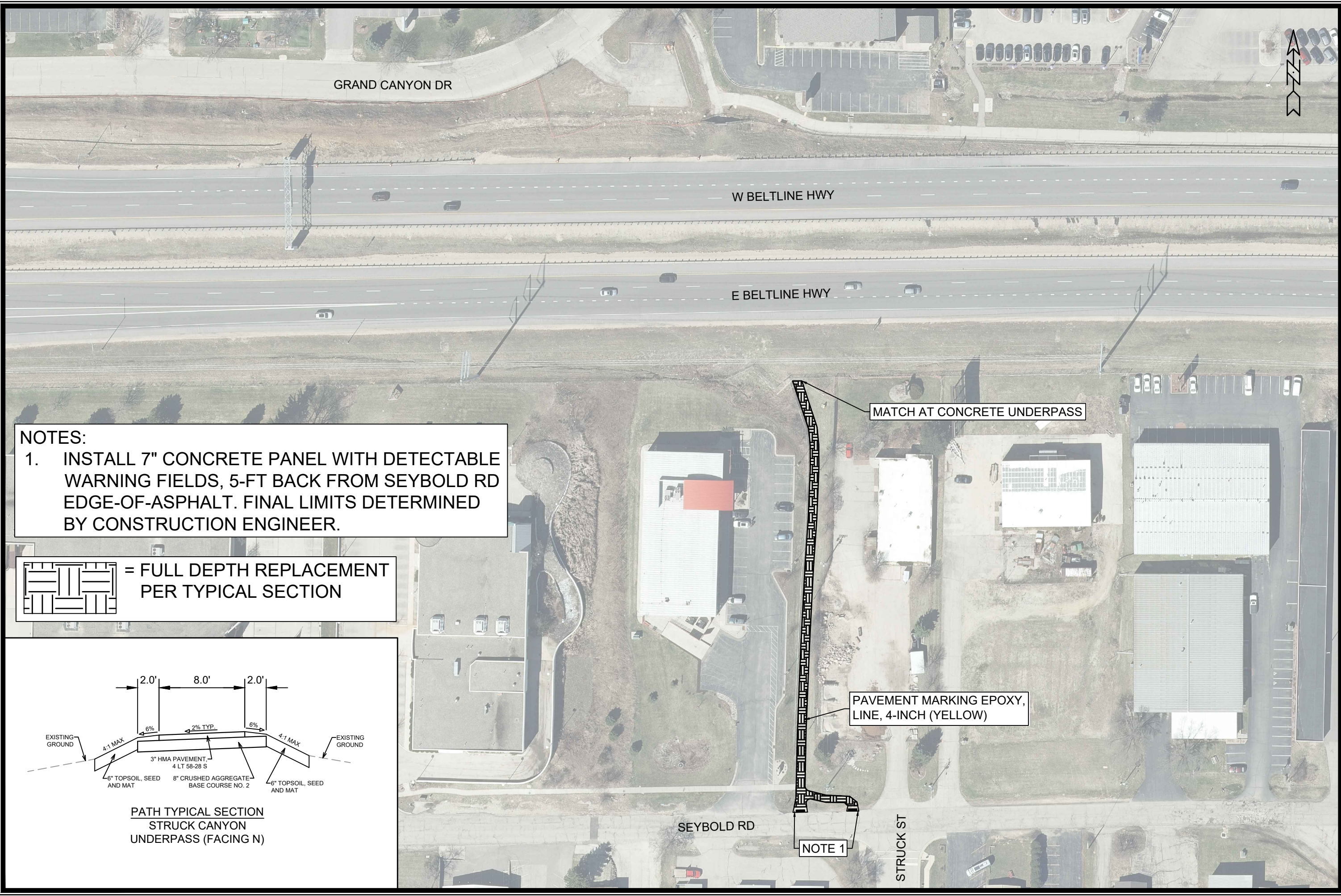
13715
 MADISON, WI
 8644
 CONTRACT NO:

SYCAMORE PARK PATH
 BIKEWAYS 2022

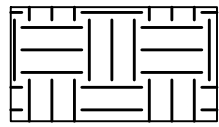
M:\DESIGN\Projects\13715\CAD\Streets\13715EN-Street_SycamorePark.dwg

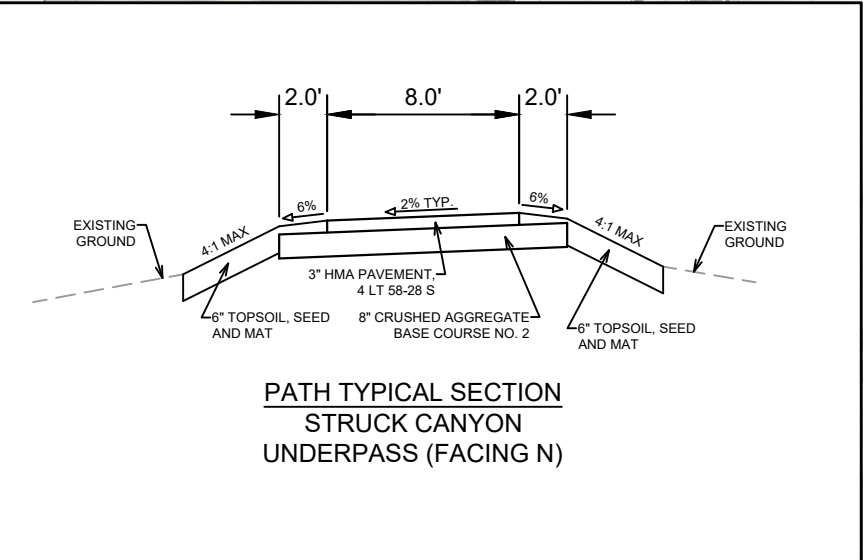


13715
 P-5



NOTES:
 1. INSTALL 7" CONCRETE PANEL WITH DETECTABLE WARNING FIELDS, 5-FT BACK FROM SEYBOLD RD EDGE-OF-ASPHALT. FINAL LIMITS DETERMINED BY CONSTRUCTION ENGINEER.

 = FULL DEPTH REPLACEMENT PER TYPICAL SECTION



MATCH AT CONCRETE UNDERPASS

PAVEMENT MARKING EPOXY, LINE, 4-INCH (YELLOW)

NOTE 1

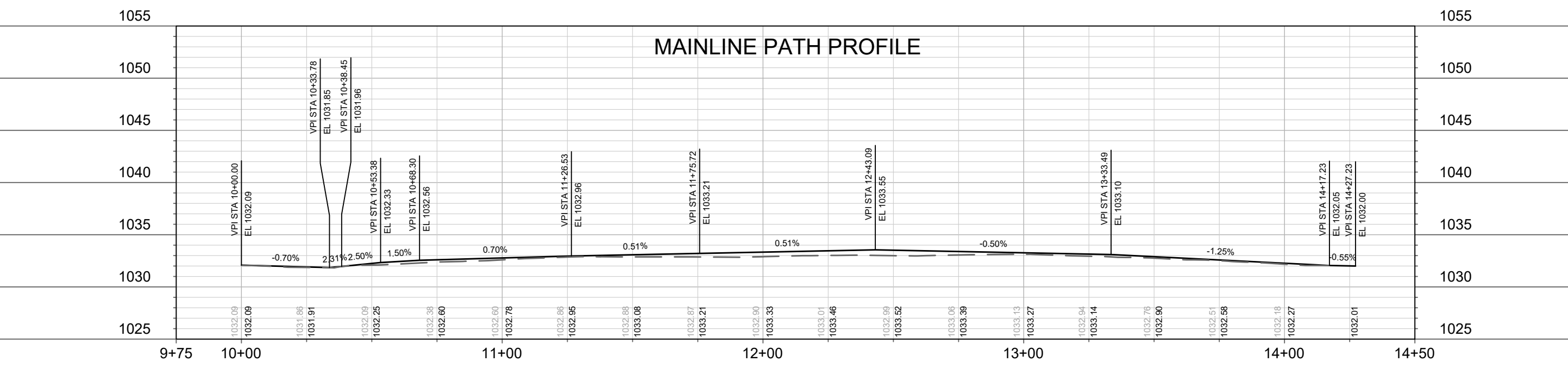
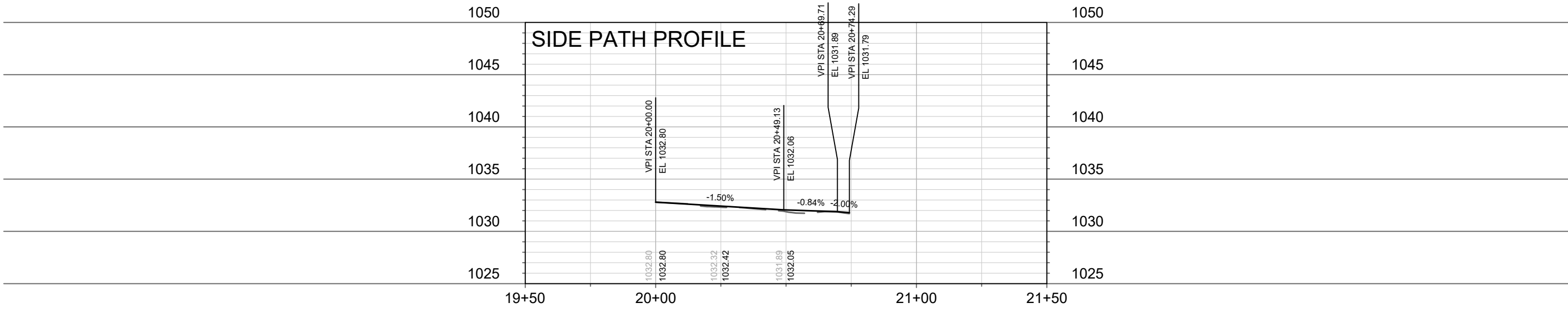
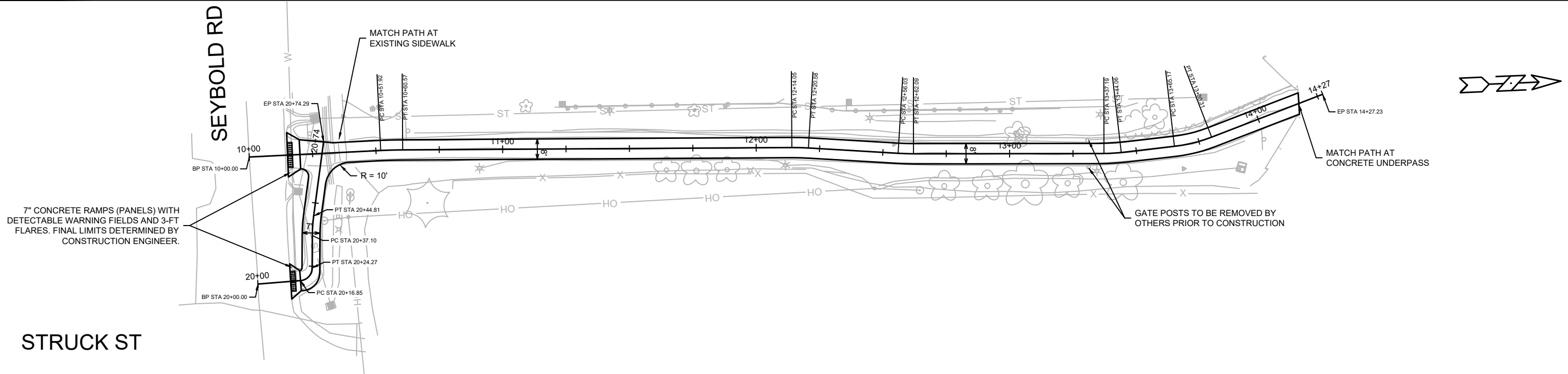
MARK	REVISION	DATE	BY
13715	13715	6/22/2022 3:28 PM	Scale: 1:80
Designed By: AJC			


13715
 MADISON, WI
 8644
 CONTRACT NO:

STRUCK CANYON UNDERPASS PATH
 BIKEWAYS 2022
 M:\DESIGN\Projects\13715\CAD\Streets\13715EN-Street_StruckCanyonUnderpass.dwg

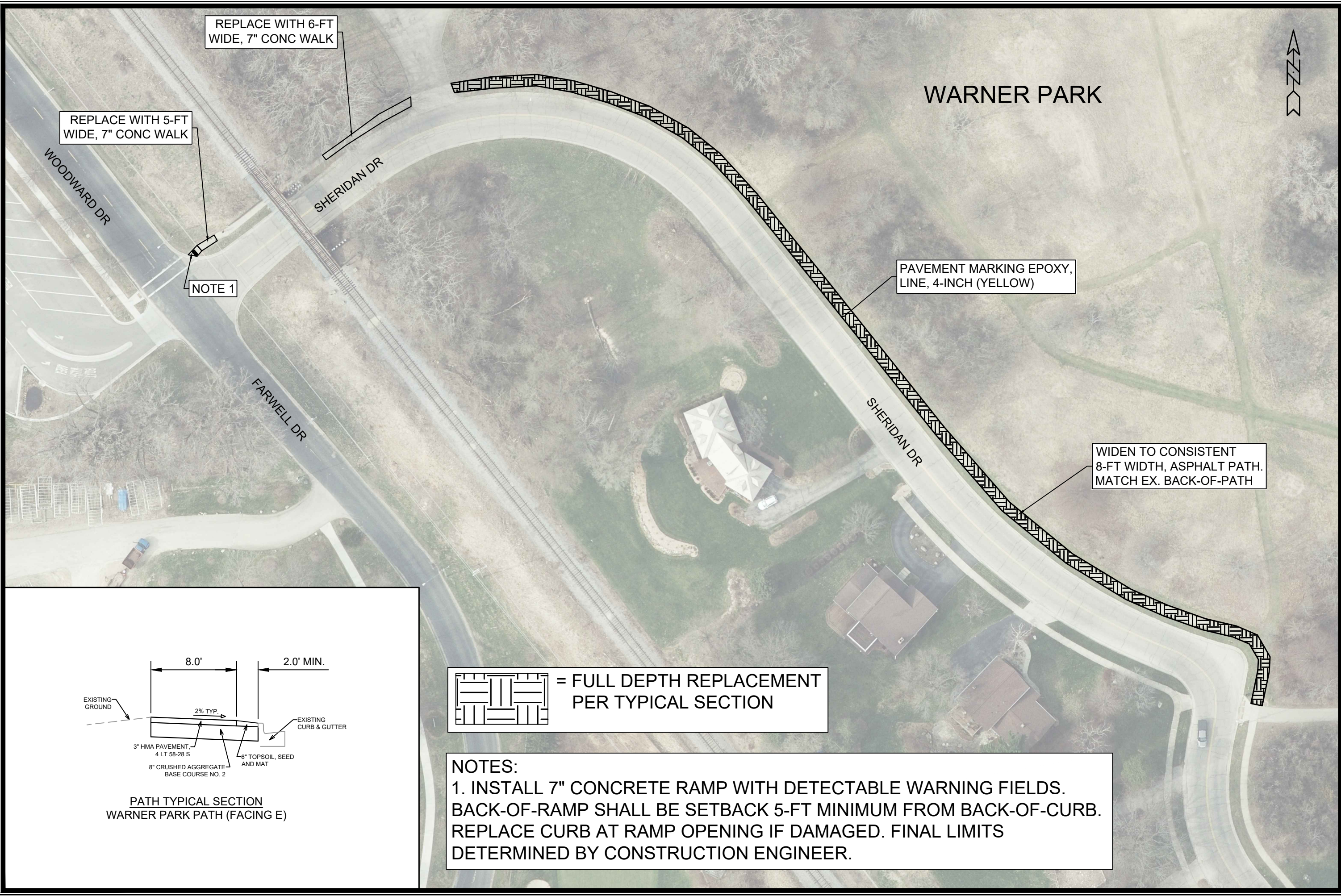


13715
 P-6



13715	MADISON, WI	8644
STRUCK CANYON UNDERPASS PATH - PLAN & PROFILE		
BIKEWAYS 2022		
M:\DESIGN\Projects\13715\CAD\Streets\13715EN-Corridor_StruckCanyonUnderpass.dwg		
		
13715	P-6.0	

MARK	REVISION	DATE	BY
13715		5/16/2023 4:19 PM	
Designed By: AJC		Scale: #####	
Date: 5/16/2023 4:19 PM		P-6.0	



REPLACE WITH 6-FT WIDE, 7" CONC WALK

REPLACE WITH 5-FT WIDE, 7" CONC WALK

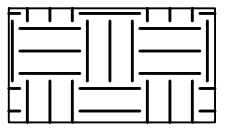
NOTE 1

WARNER PARK

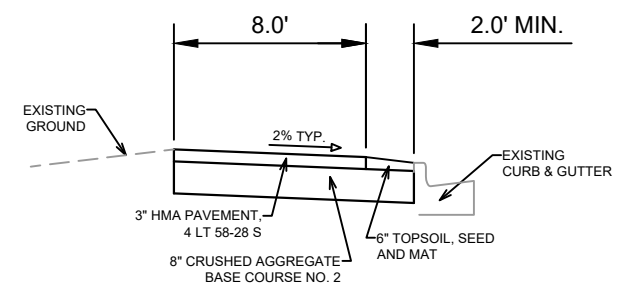


PAVEMENT MARKING EPOXY, LINE, 4-INCH (YELLOW)

WIDEN TO CONSISTENT 8-FT WIDTH, ASPHALT PATH. MATCH EX. BACK-OF-PATH

 = FULL DEPTH REPLACEMENT PER TYPICAL SECTION

NOTES:
 1. INSTALL 7" CONCRETE RAMP WITH DETECTABLE WARNING FIELDS. BACK-OF-RAMP SHALL BE SETBACK 5-FT MINIMUM FROM BACK-OF-CURB. REPLACE CURB AT RAMP OPENING IF DAMAGED. FINAL LIMITS DETERMINED BY CONSTRUCTION ENGINEER.



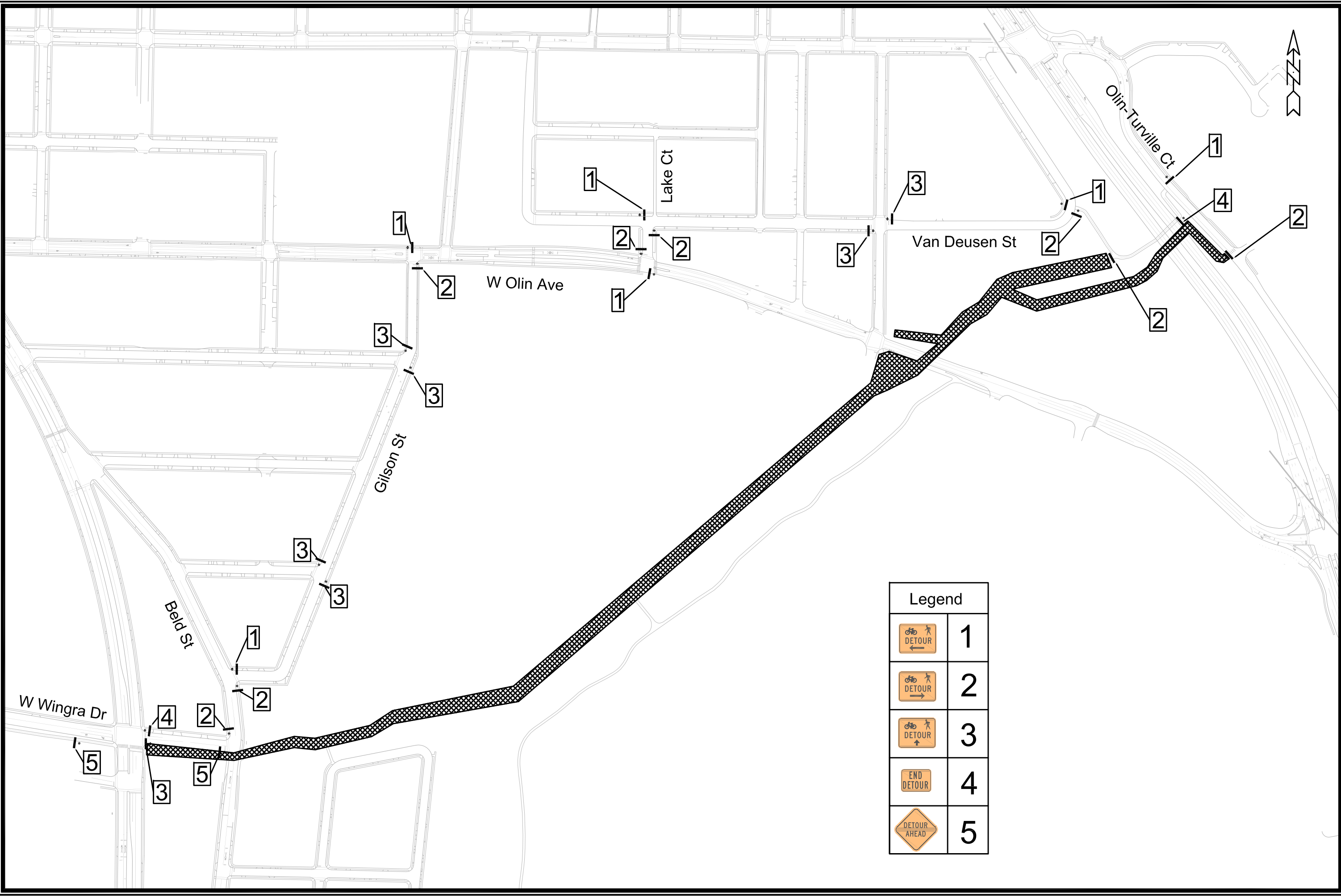
PATH TYPICAL SECTION
 WARNER PARK PATH (FACING E)

MARK	REVISION	DATE	BY
13715	06/22/2022 3:28 PM		
Designed By: AJC	Date: 06/22/2022 3:28 PM	Scale: 1:60	P-7

13715
 MADISON, WI
 8644
 CONTRACT NO:

WARNER PARK PATH
 BIKEWAYS 2022
 M:\DESIGN\Projects\13715\CAD\Streets\13715EN-Street_WarnerPark.dwg





Legend	
	1
	2
	3
	4
	5

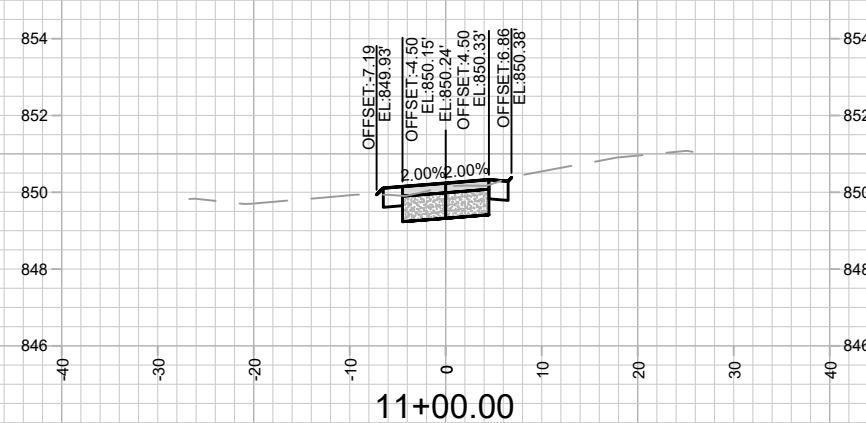
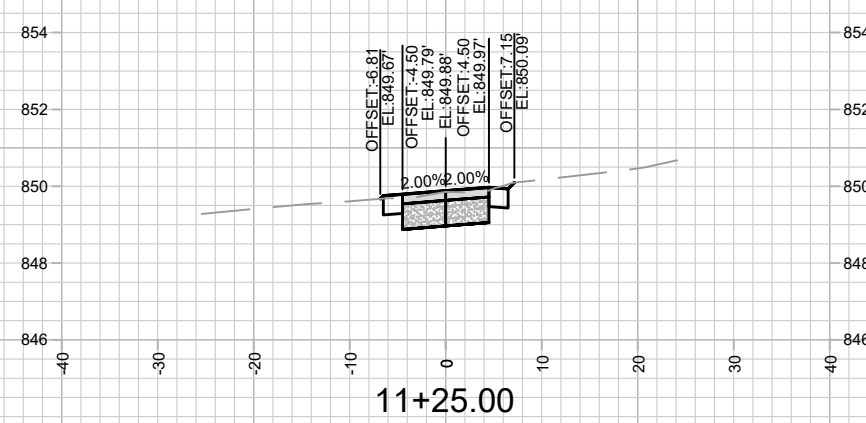
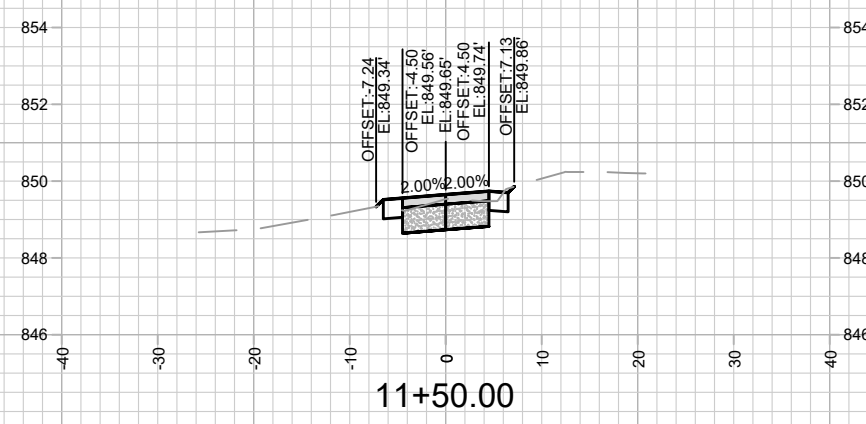
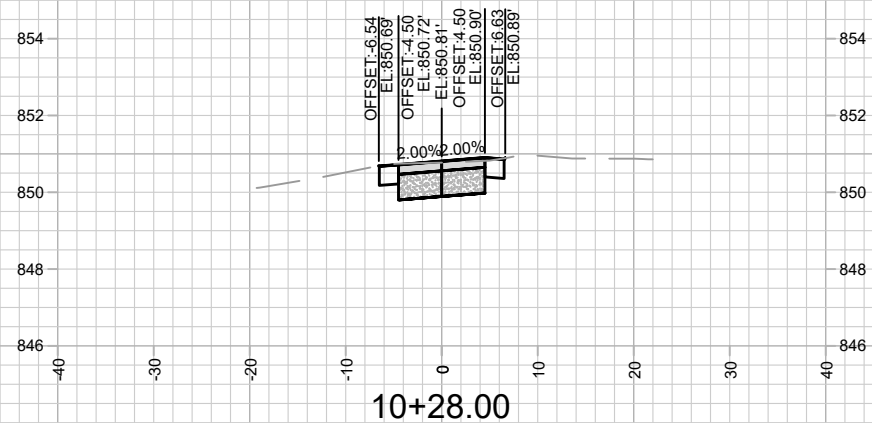
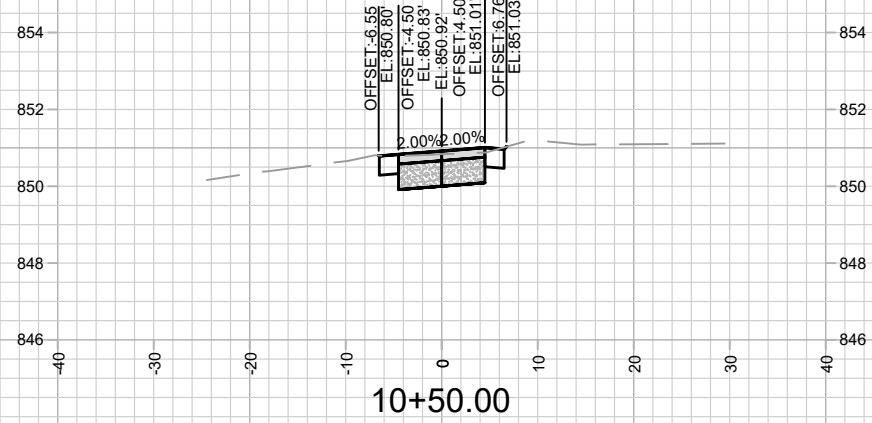
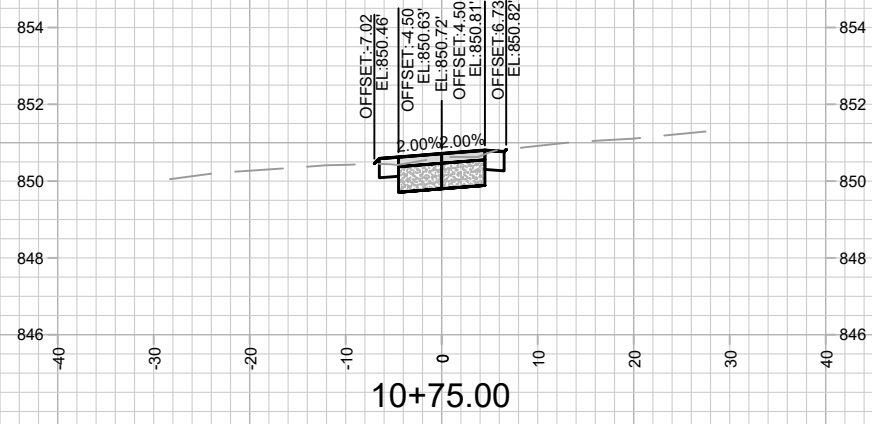
MARK	REVISION	DATE	BY
13715	6/21/2022 3:53 PM	13715	D-1

13715
 MADISON, WI
 CONTRACT NO: 8644

WINGRA CREEK BIKE PATH DETOUR
 BIKEWAYS 2022
 U:\Rough Drafts\Bikeways 2022\Bikeways 2022 Detour Plan.dwg



13715
 D-1



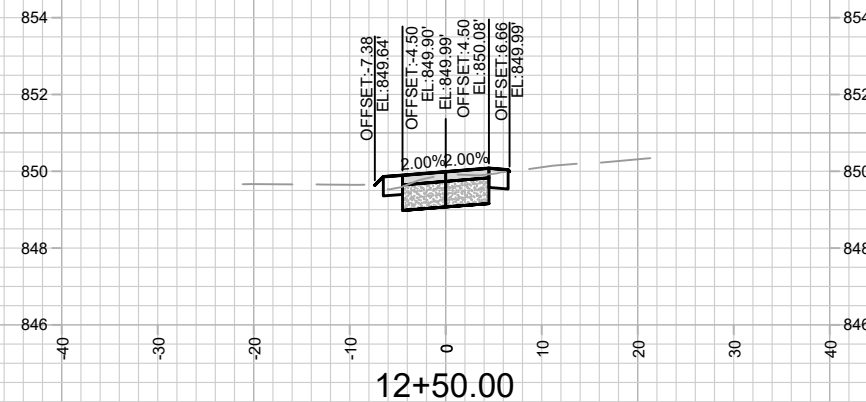
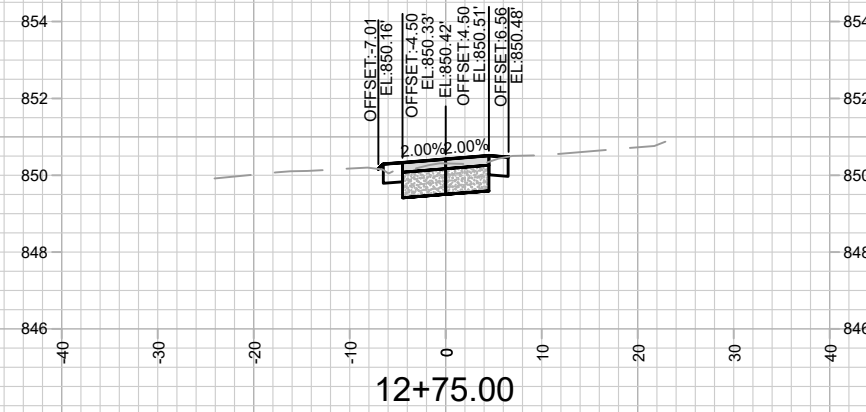
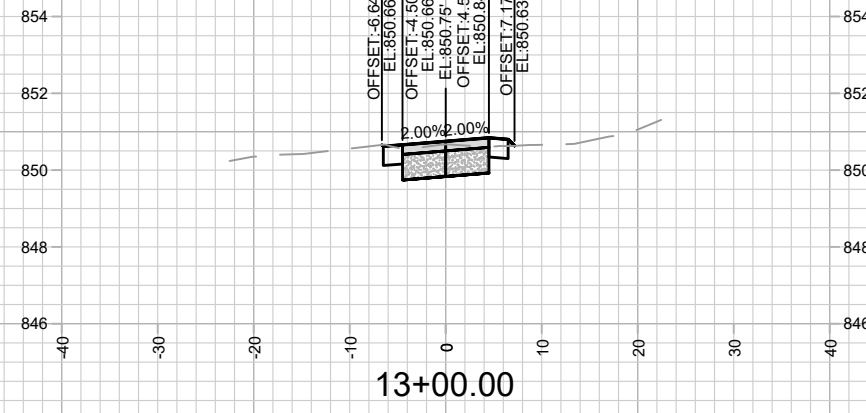
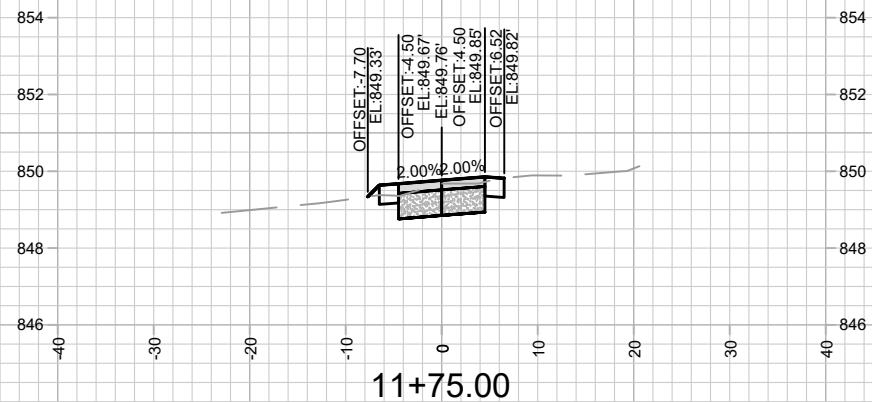
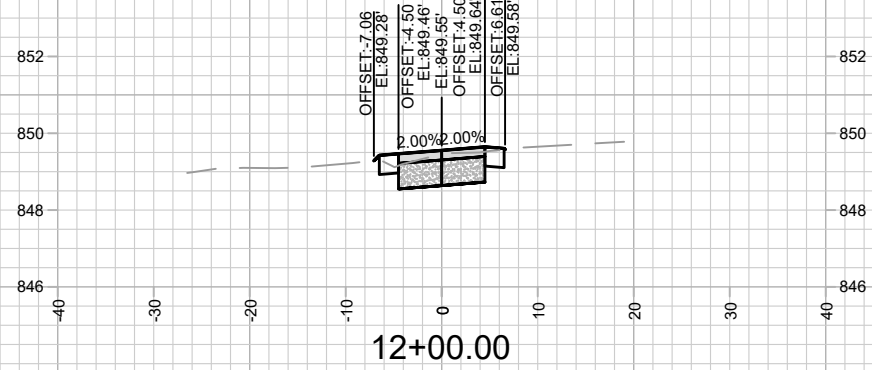
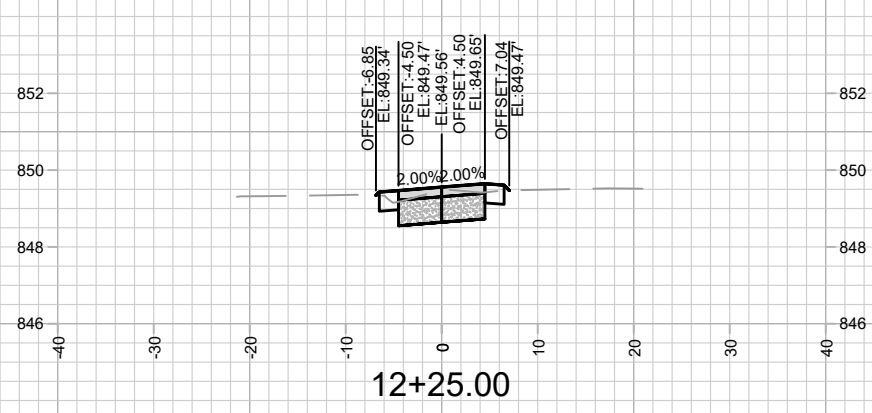
MARK	REVISION	DATE	BY
13715	Designed By: AJC	Date: 5/9/2023 4:21 PM	Scale: #####
13715			X-1

13715
MADISON, WI
8644
CONTRACT NO:

SHERRY PARK PATH - CROSS SECTIONS
BIKEWAYS 2022
M:\DESIGN\Projects\13715\CAD\Streets\13715SVY-Corridor_OBS\SherryPark.dwg



13715
X-1



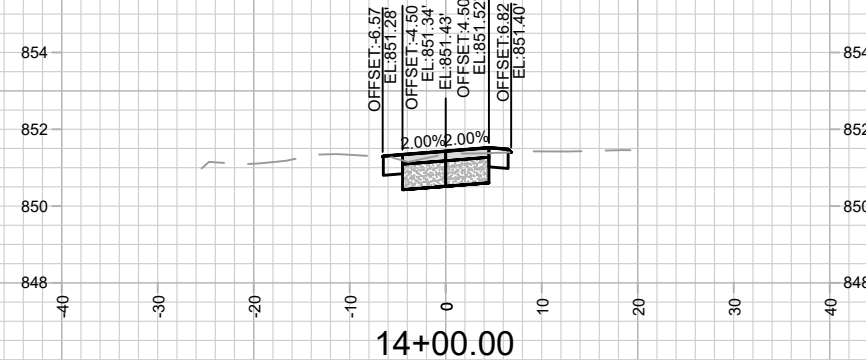
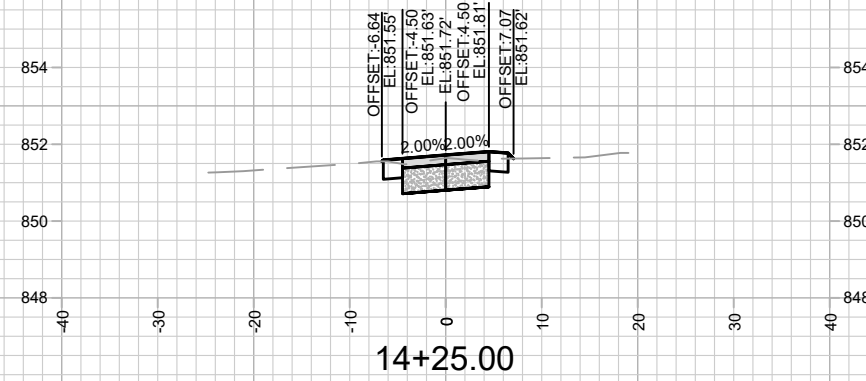
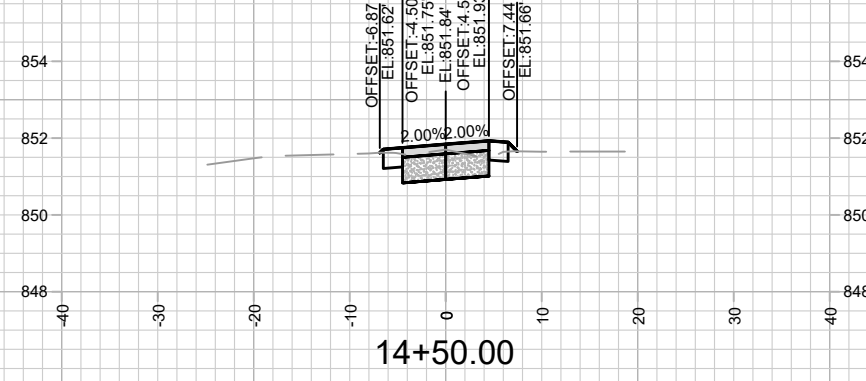
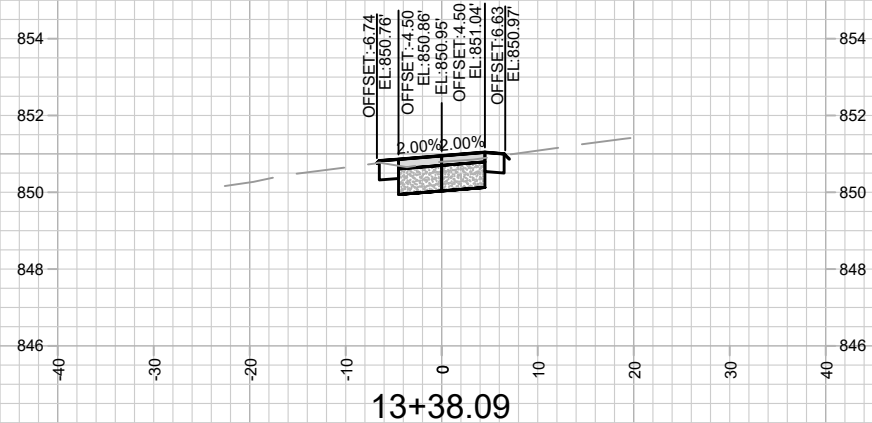
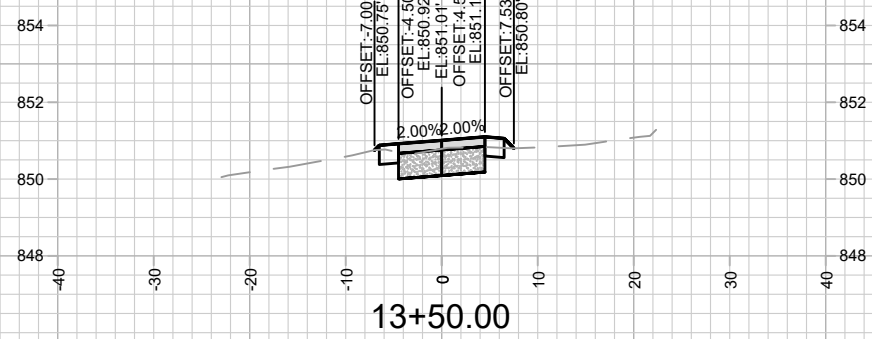
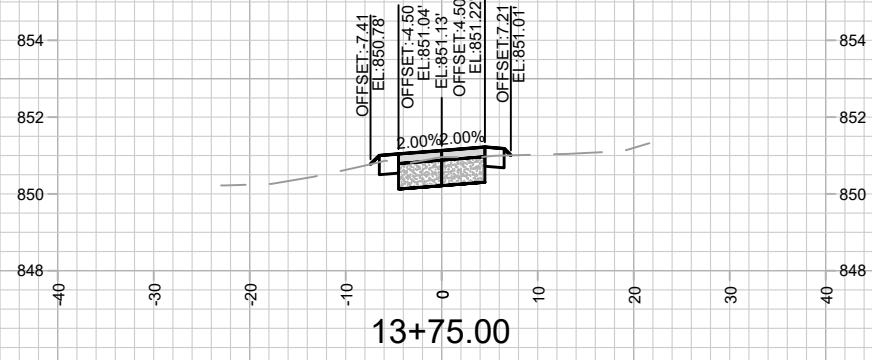
MARK	REVISION	DATE	BY
13715	5/6/2023 4:21 PM		
Scale: #####			X-2

13715
MADISON, WI
8644
CONTRACT NO:

SHERRY PARK PATH - CROSS SECTIONS
BIKEWAYS 2022
M:\DESIGN\Projects\13715\CAD\Streets\13715SVY-Corridor_OBS\SherryPark.dwg



13715
X-2



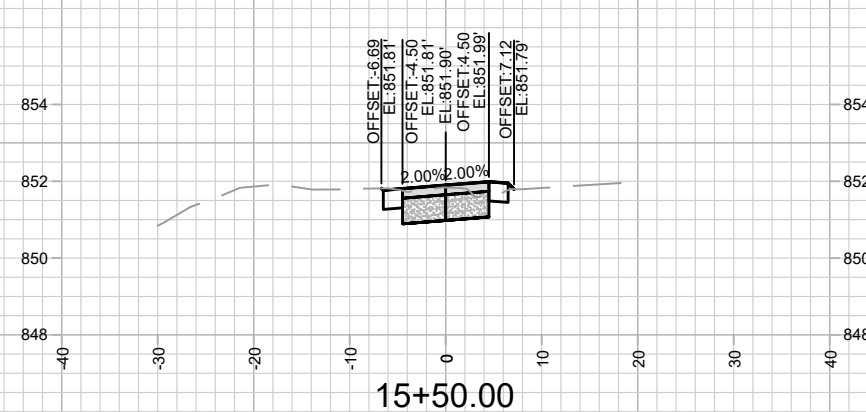
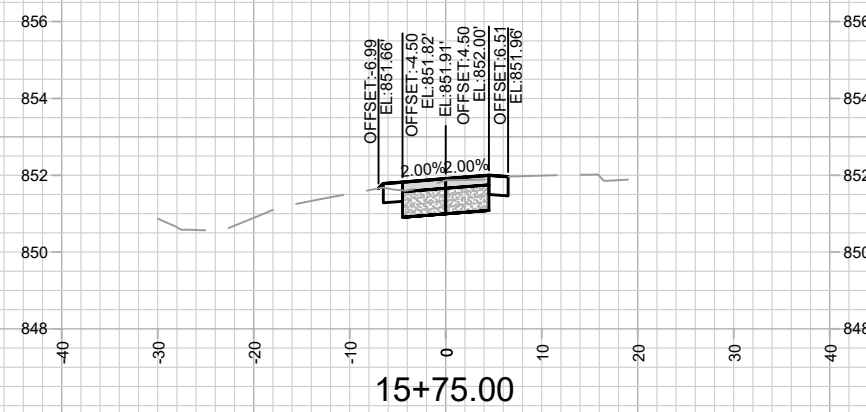
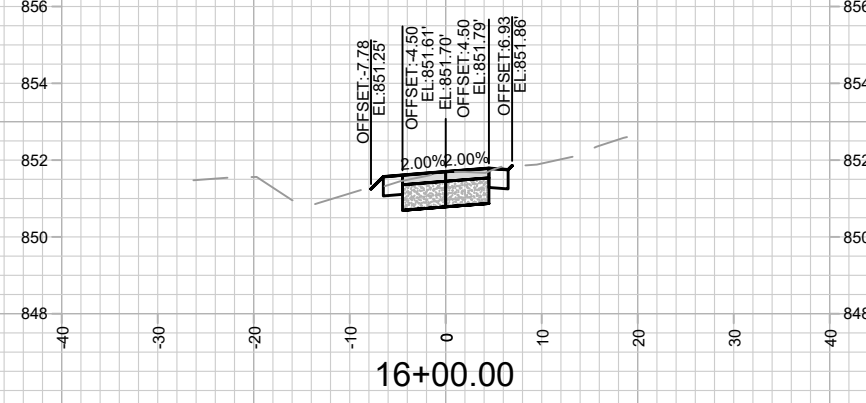
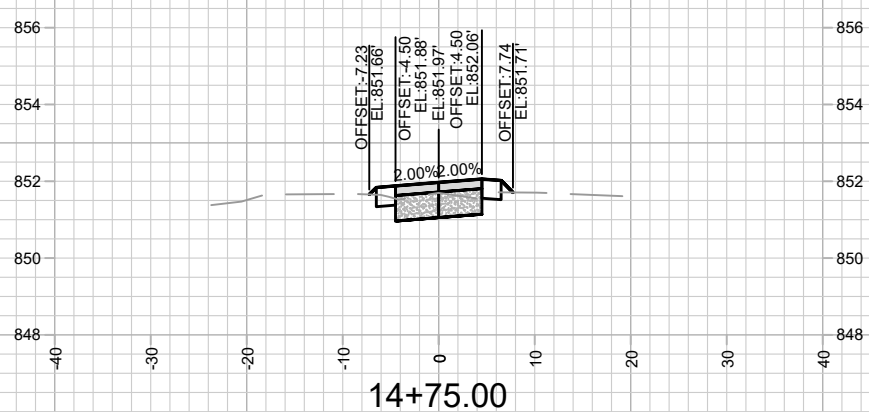
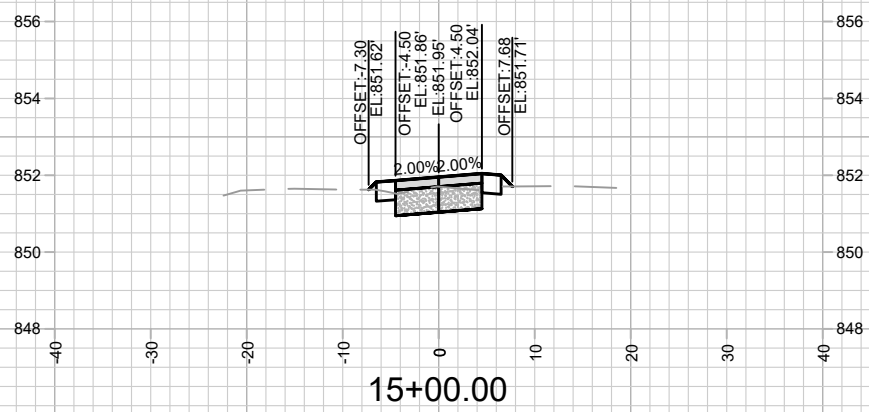
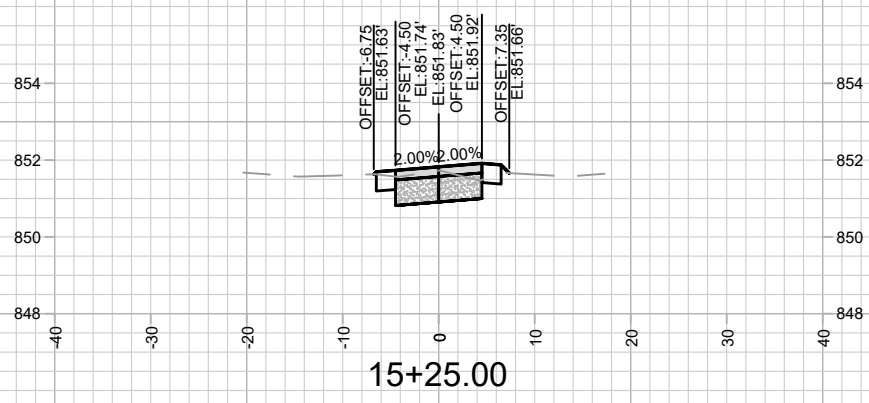
MARK	REVISION	DATE	BY
13715	5/8/2023 4:21 PM		
Scale: #####			X-3

13715
MADISON, WI
8644
CONTRACT NO:

SHERRY PARK PATH - CROSS SECTIONS
BIKEWAYS 2022
M:\DESIGN\Projects\13715\CAD\Streets\13715SVY-Corridor_OBSherryPark.dwg



13715
X-3



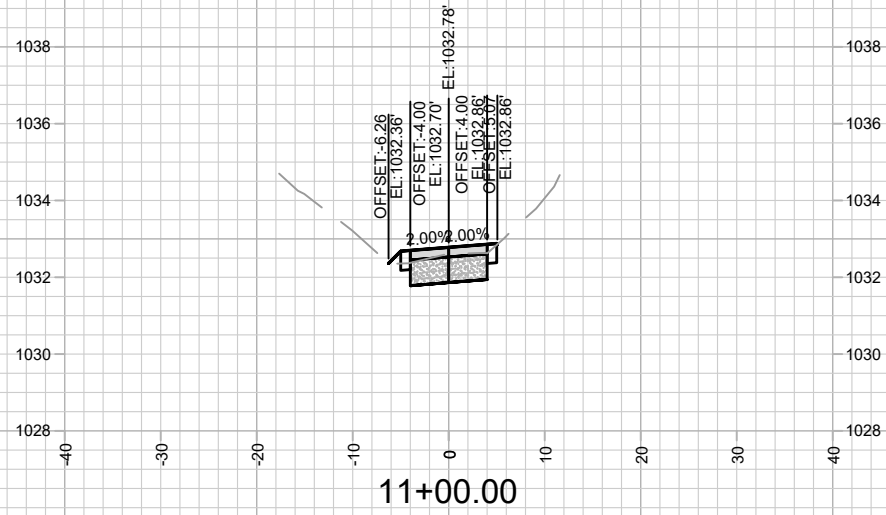
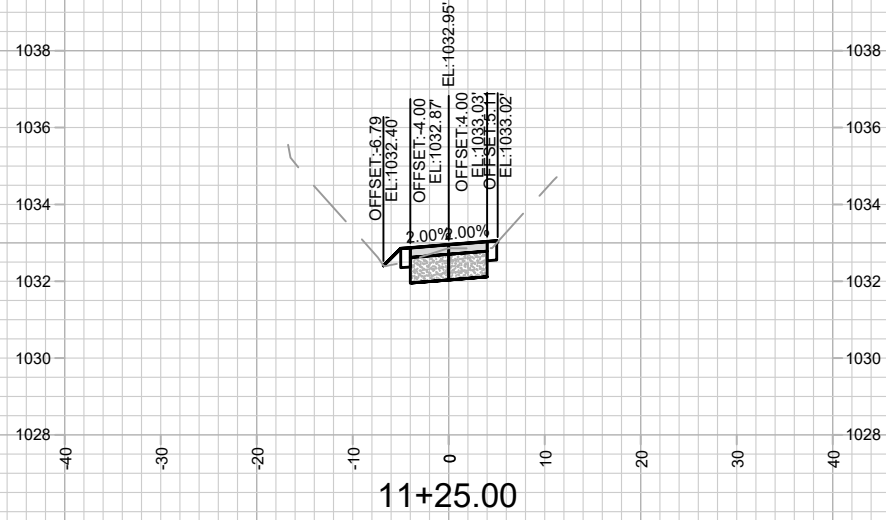
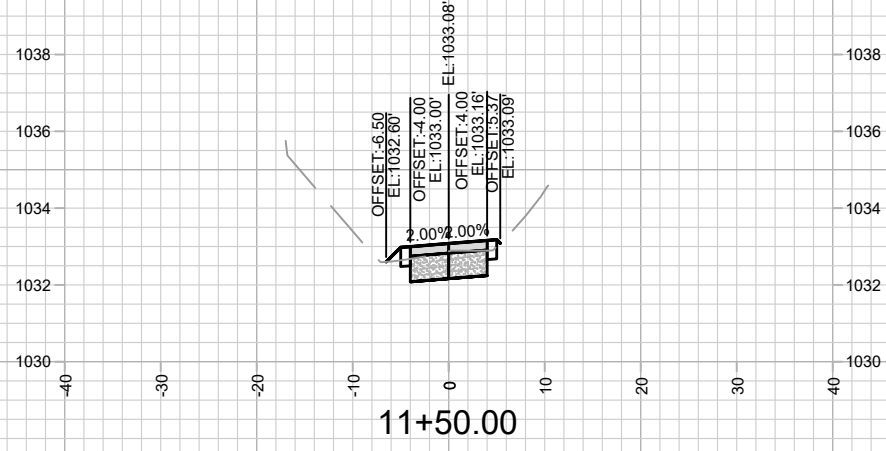
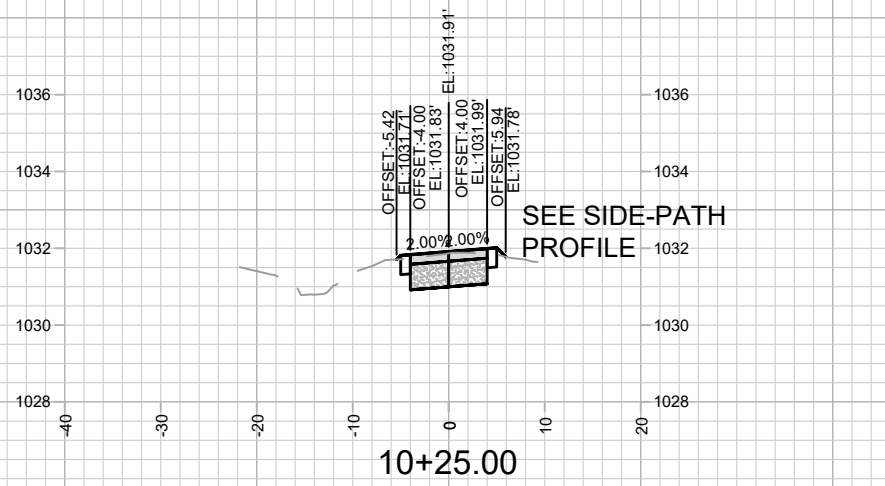
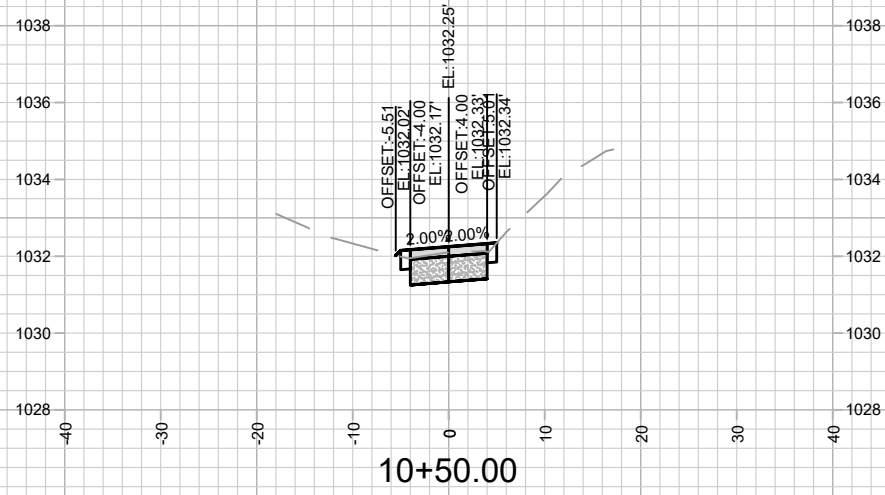
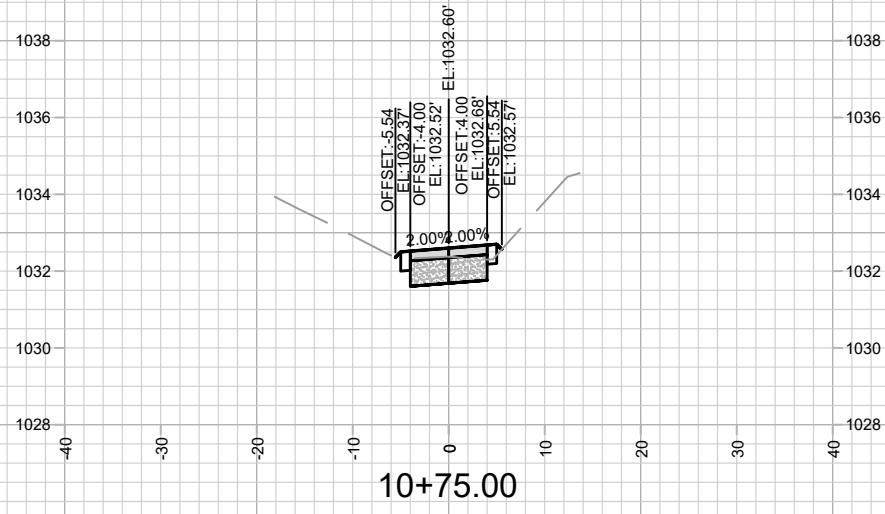
13715
X-4

SHERRY PARK PATH - CROSS SECTIONS
BIKEWAYS 2022

M:\DESIGN\Projects\13715\CAD\Streets\13715SVY-Corridor_OBS\SherryPark.dwg

13715
MADISON, WI
8644
CONTRACT NO:

MARK	REVISION	DATE	BY
13715	5/6/2023 4:21 PM		X-4



MARK	REVISION	DATE	BY
13715	5/12/2023 2:07 PM	###	###
Designed By: AJC		Scale: #####	
13715		X-5	

13715
 MADISON, WI
 8644
 CONTRACT NO:

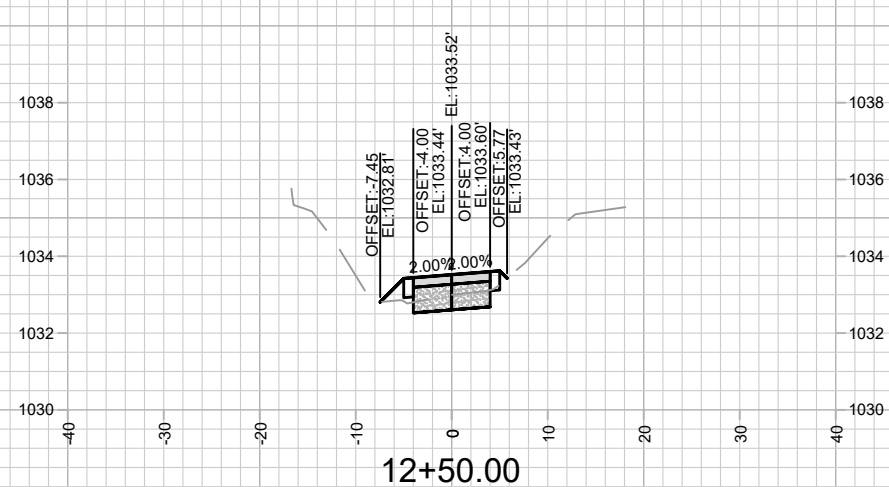
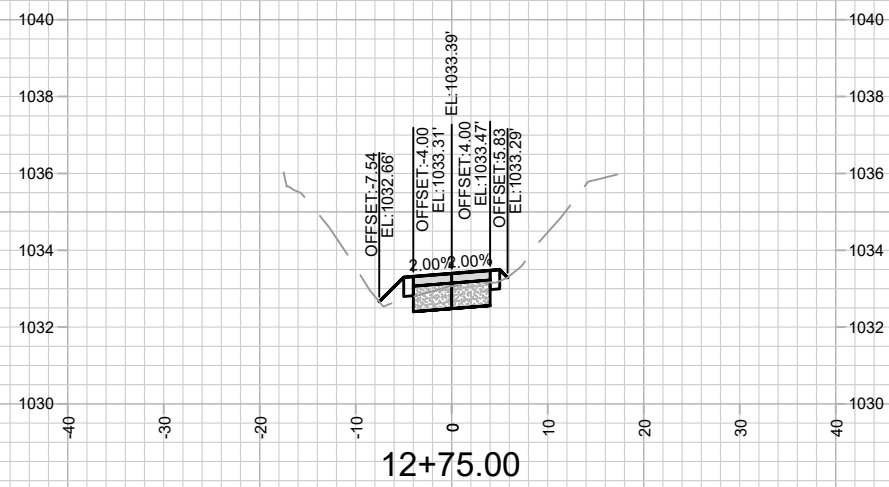
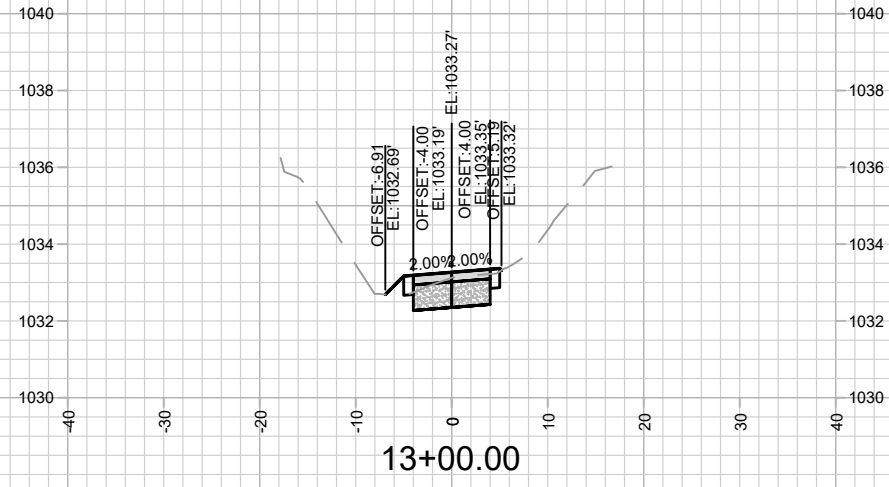
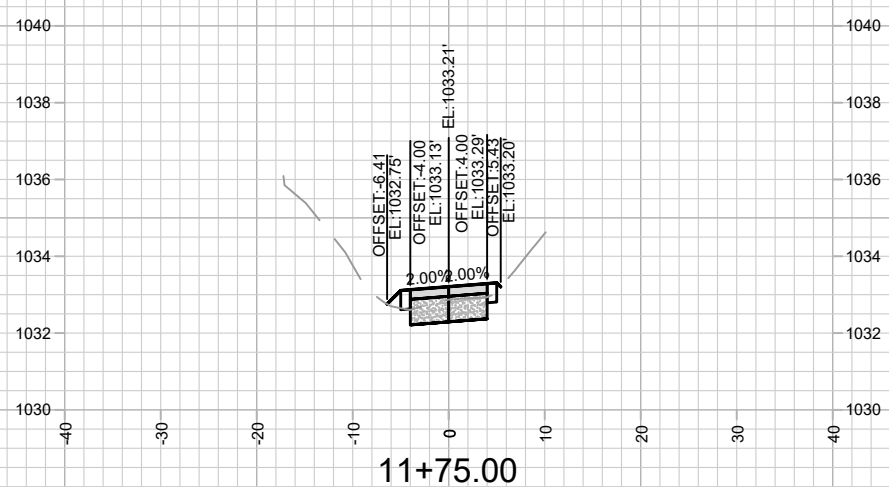
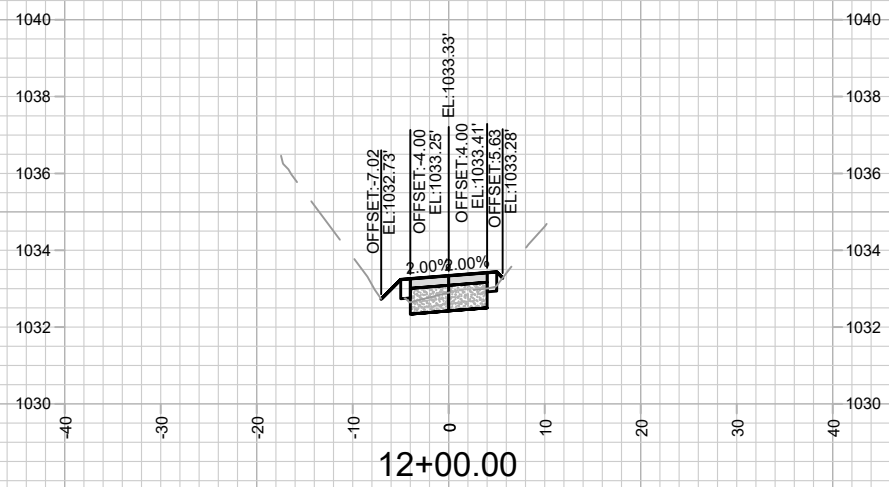
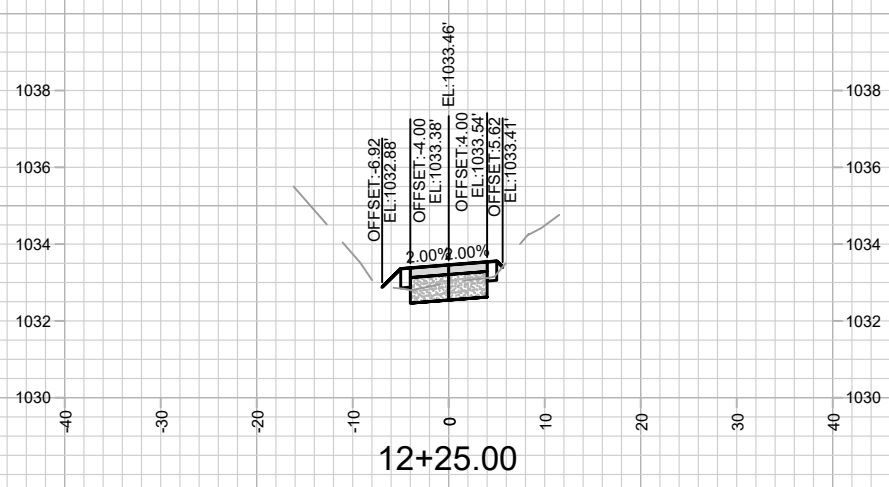


13715
 X-5

STRUCK CANYON UNDERPASS PATH - CROSS SECTIONS

BIKEWAYS 2022

M:\DESIGN\Projects\13715\CAD\Streets\13715EN-Corridor_StruckCanyonUnderpass.dwg



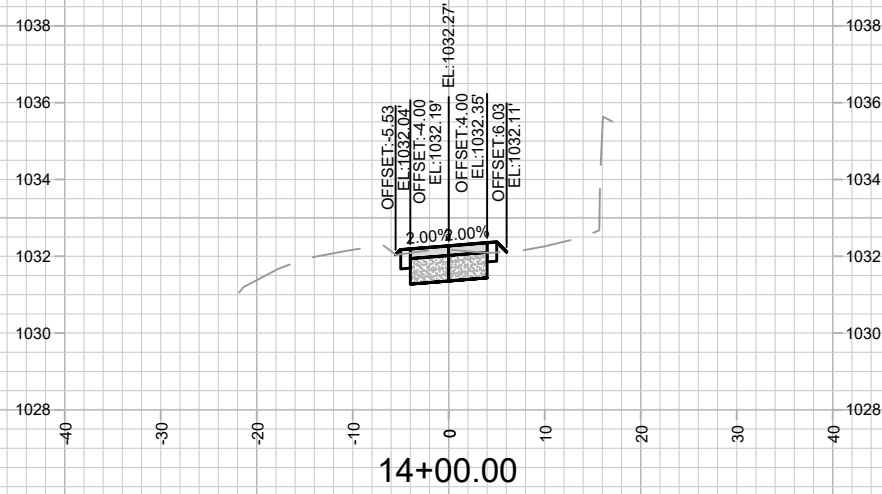
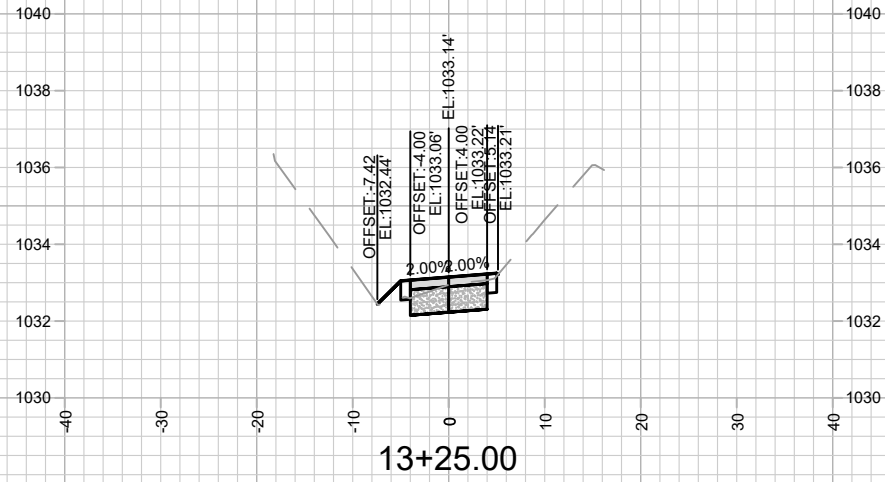
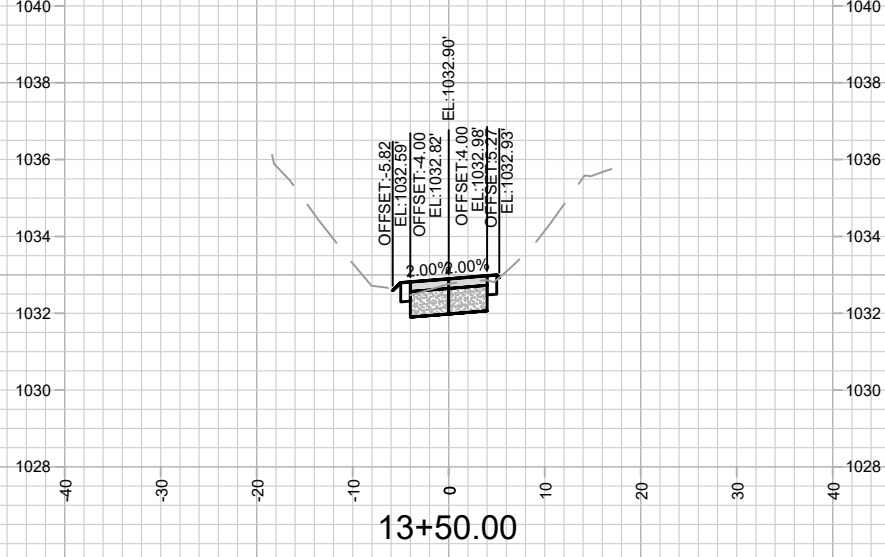
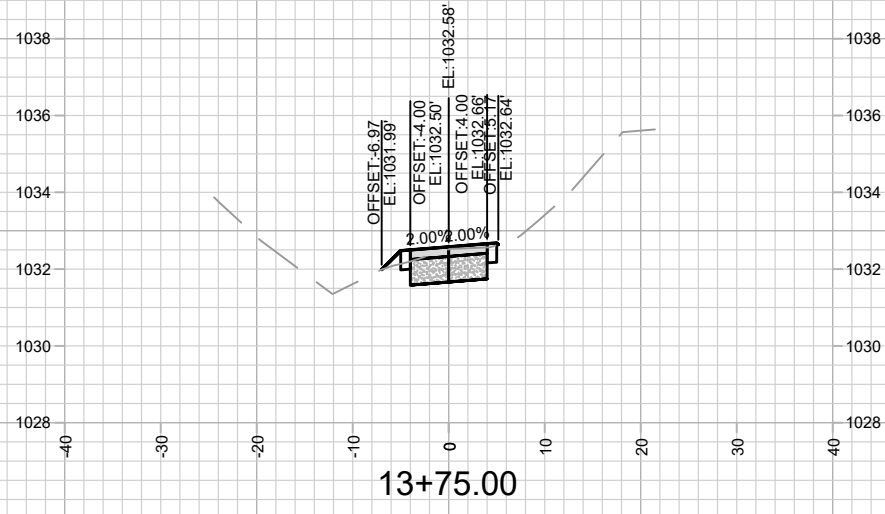
MARK	REVISION	DATE	BY
13715	5/17/2023 2:07 PM		
Scale: #####			X-6

13715
MADISON, WI
8644
CONTRACT NO:

STRUCK CANYON UNDERPASS PATH - CROSS SECTIONS
BIKEWAYS 2022
M:\DESIGN\Projects\13715\CAD\Streets\13715EN-Corridor_StruckCanyonUnderpass.dwg



13715
X-6



13715
X-7

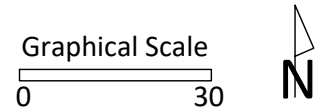
STRUCK CANYON UNDERPASS PATH - CROSS SECTIONS
BIKEWAYS 2022

M:\DESIGN\Projects\13715\CAD\Streets\13715EN-Corridor_StruckCanyonUnderpass.dwg

MADISON, WI
CONTRACT NO: 8644

13715
13715
Scale: #####

MARK	REVISION	DATE	BY
13715 <td>5/17/2023 2:07 PM <td></td> <td></td> </td>	5/17/2023 2:07 PM <td></td> <td></td>		
			X-7



PROJECT:
**SYCAMORE PARK
 PATH
 RECONSTRUCTION
 2023**

PROJECT ADDRESS:
**SYCAMORE PARK
 4517 SYCAMORE AVE
 MADISON, WI 53704**

Although every effort has been made in preparing these plans and checking them for accuracy, the contractor and subcontractors must check all details and dimensions of their trade and be responsible for the same.

ITEM	DATE

PUBLIC WORKS PROJECT #:
TBD

SHEET TITLE:
GRADING AND PAVING

SHEET NUMBER:
1.2

